



THAMES CITY

LONDON SW8



BUILDING NO.8

—

THAMES
CITY



PERFECTLY POSITIONED

- 1 NEW COVENT GARDEN MARKET
- 2 US EMBASSY
- 3 NINE ELMS SUNDAY MARKET
- 4 DELICIAS DELI
- 5 MEGAN'S RESTAURANT
- 6 BATTERSEA POWER STATION PIER
- 7 PEAR TREE CAFE
- 8 THE LONDON PEACE PAGODA
- 9 THE PRINCE ALBERT PUB
- 10 ROYAL COLLEGE OF ART BATTERSEA
- 11 AUGUSTINE KITCHEN
- 12 THE LIGHTHOUSE BATTERSEA PUB
- 13 CHELSEA EMBANKMENT
- 14 CHELSEA PHYSIC GARDEN
- 15 RESTAURANT GORDON RAMSAY
- 16 GORDON RAMSAY BAR & GRILL
- 17 ROYAL HOSPITAL CHELSEA
- 18 KING'S ROAD SHOPPING
- 19 STICKS 'N' SUSHI
- 20 NO.11 PIMLICO ROAD BAR & RESTAURANT
- 21 LA POULE AU POT RESTAURANT
- 22 COLBERT RESTAURANT
- 23 BRUNSWICK HOUSE BAR & RESTAURANT
- 24 VINE BAR
- 25 ITALO DELI
- 26 GASWORKS GALLERY
- 27 NEWPORT STREET GALLERY
- 28 GARDEN MUSEUM
- 29 SLOANE STREET SHOPPING
- 30 HARVEY NICHOLS KNIGHTSBRIDGE
- 31 VICTORIA & ALBERT MUSEUM
- 32 IMPERIAL COLLEGE LONDON
- 33 HARD ROCK CAFE
- 34 THE DORCHESTER HOTEL
- 35 THE RITZ HOTEL
- 36 TRAFALGAR SQUARE
- 37 SHAFTESBURY AVENUE
- 38 CLARIDGE'S HOTEL
- 39 ROYAL LANCASTER LONDON HOTEL
- 40 THE DESIGN MUSEUM



Map is not to scale and is indicative only.

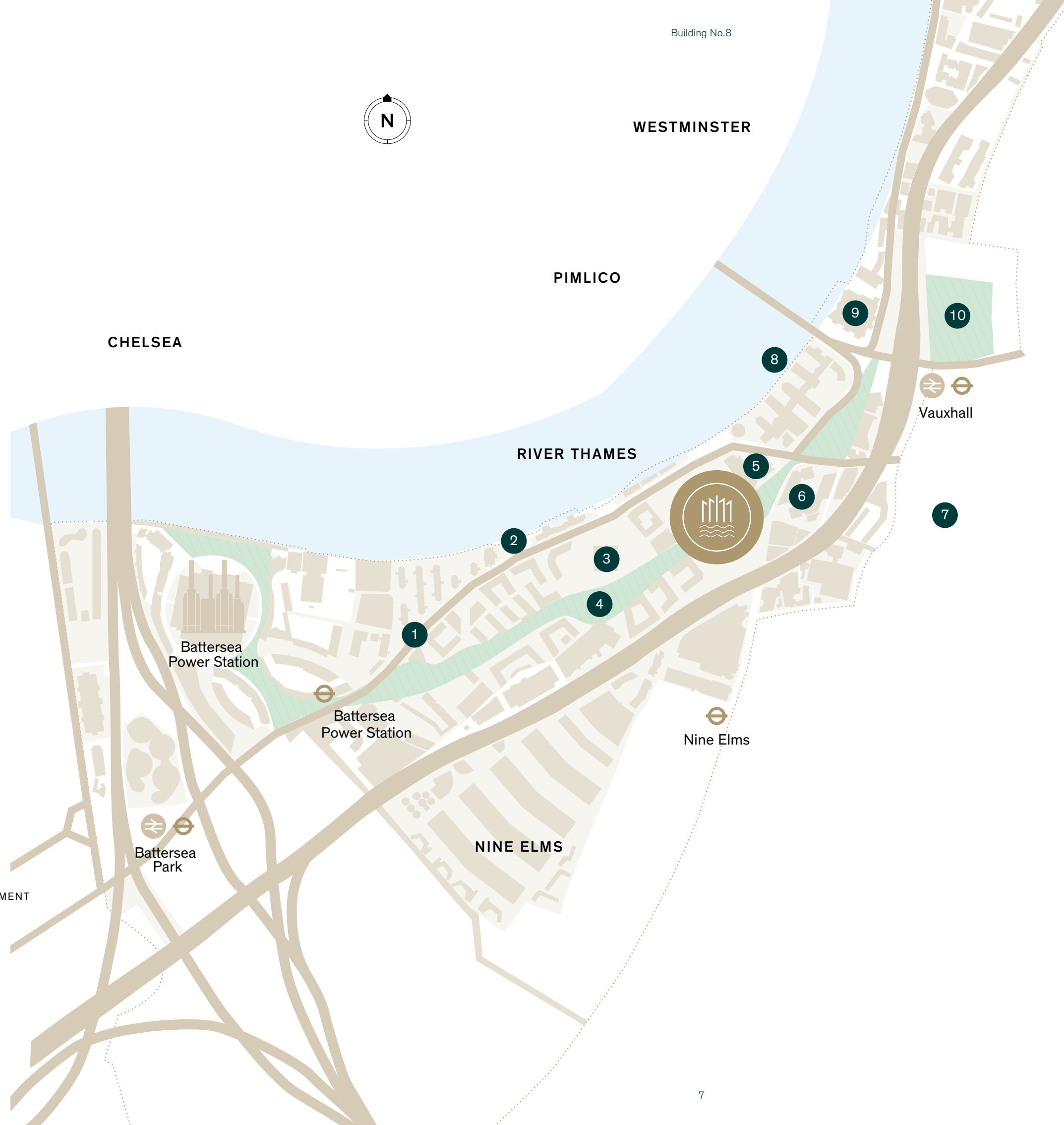
The old industrial sites in Nine Elms are being completely transformed. The historic Vauxhall Cross and Albert Embankment are being redesigned into an attractive, pedestrian-friendly destination.

NINE ELMS

Nine Elms is the most ambitious regeneration project undertaken in London for decades. Taking advantage of its prime central and riverside location, it will completely transform the area, introducing new transport links and public spaces to create a vibrant destination for city dwellers and visitors.

- 1 THE NEW COVENT GARDEN MARKET
- 2 THE RIVER WALKWAY
- 3 US EMBASSY
- 4 LINEAR PARK
- 5 FORTHCOMING R&F DEVELOPMENT

- 6 FORTHCOMING R&F DEVELOPMENT
- 7 VAUXHALL PARK
- 8 ST GEORGE WHARF PIER
- 9 M16
- 10 PLEASURE GARDENS



THE LOCATION

SO MUCH TO EXPLORE

A place where you can enjoy direct views over the West End and the City of London and from where you can take an easy stroll along or over the river, to enjoy the very best of international culture, entertainment, retail and the Westminster hub.





Natural History Museum



The Serpentine



Harrods



Westminster



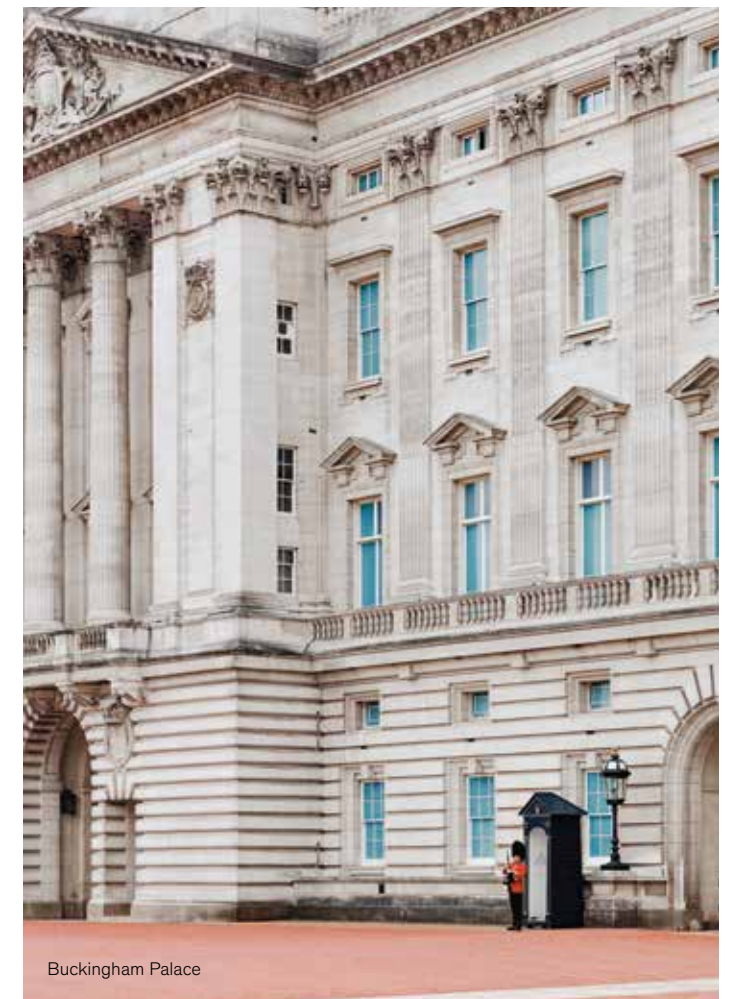
London Eye



Royal Albert Hall



Southbank Centre



Buckingham Palace

GETTING AROUND

With the newly opened Nine Elms tube station and Vauxhall tube and mainline station less than a ten minute walk away, getting around London from Thames City couldn't be simpler. You also have the enjoyable option of using the Thames Clipper service, whether to cruise up and down the river in your leisure time or to travel to your place of work each day.

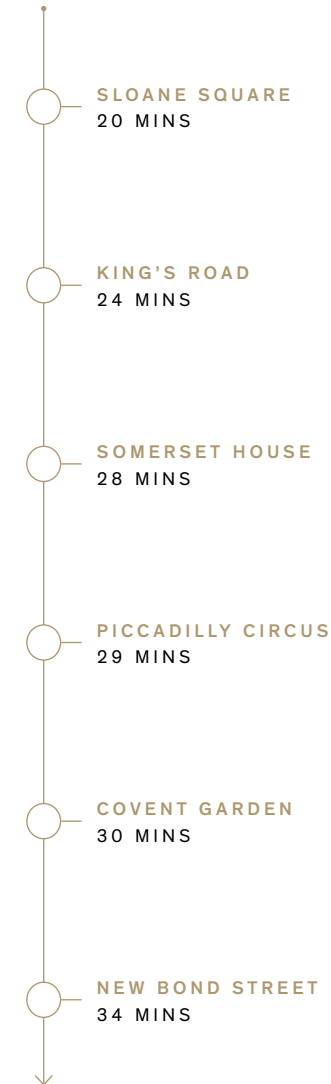


London and international travel is easy with multiple transport links on your doorstep and popular destinations accessible by foot.

BY TAXI

1

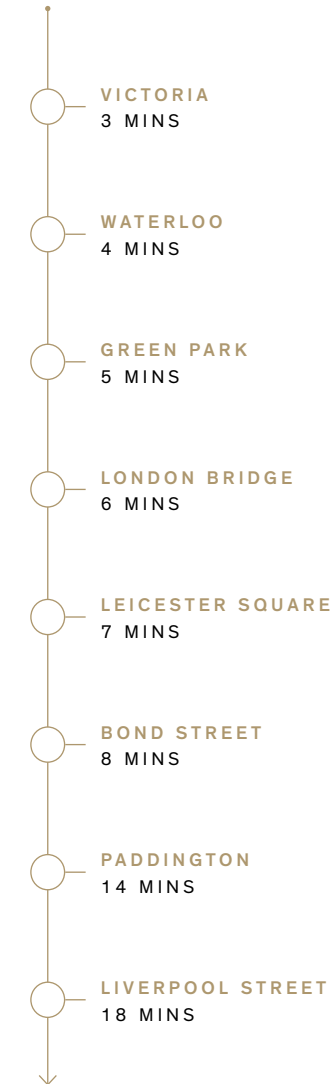
MINUTE WALK FROM THAMES CITY



BY TUBE & RAIL

5

MINUTES WALK TO VAUXHALL STATION



TO AIRPORTS

6

MINUTES WALK TO VAUXHALL STATION



BY RIVER BOAT

7

MINUTES WALK TO ST GEORGE WHARF PIER



THAMES CITY

AN UNPARALLELED AMBITION



Step inside this fresh district of London with three residential towers at its helm that's set to become the new favourite landmark on the London skyline. This luxury development is the ultimate combination of inventive contemporary living in a historic London location within the greenest of green surroundings.



No.8



SITE PLAN

- 1 PARK HYATT HOTEL
- 2 THAMES CITY PHASE 1
- 3 THAMES CITY PHASE 2
- 4 FORTHCOMING R&F DEVELOPMENT

LINEAR PARK

Linear Park is a brand new London park that provides a green walk from Vauxhall Bridge to Battersea Power Station. Publicly accessible it encompasses charming play areas, sculptured seating and hundreds of new trees.



Beautiful oriental planting and discretely placed seating create a delightful relaxing setting.

ENTRANCE LOBBY

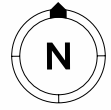
Arriving at your home in Thames City is an experience equal to entering the world's most luxurious and exclusive hotels.





WEST COURTYARD

The impressive structure of West Courtyard is a focal point within Thames City.



LEVEL – PODIUM GARDENS

The Podium provides a calm and secluded retreat for the residents at Thames City.

THE AMENITIES

DIVE INTO

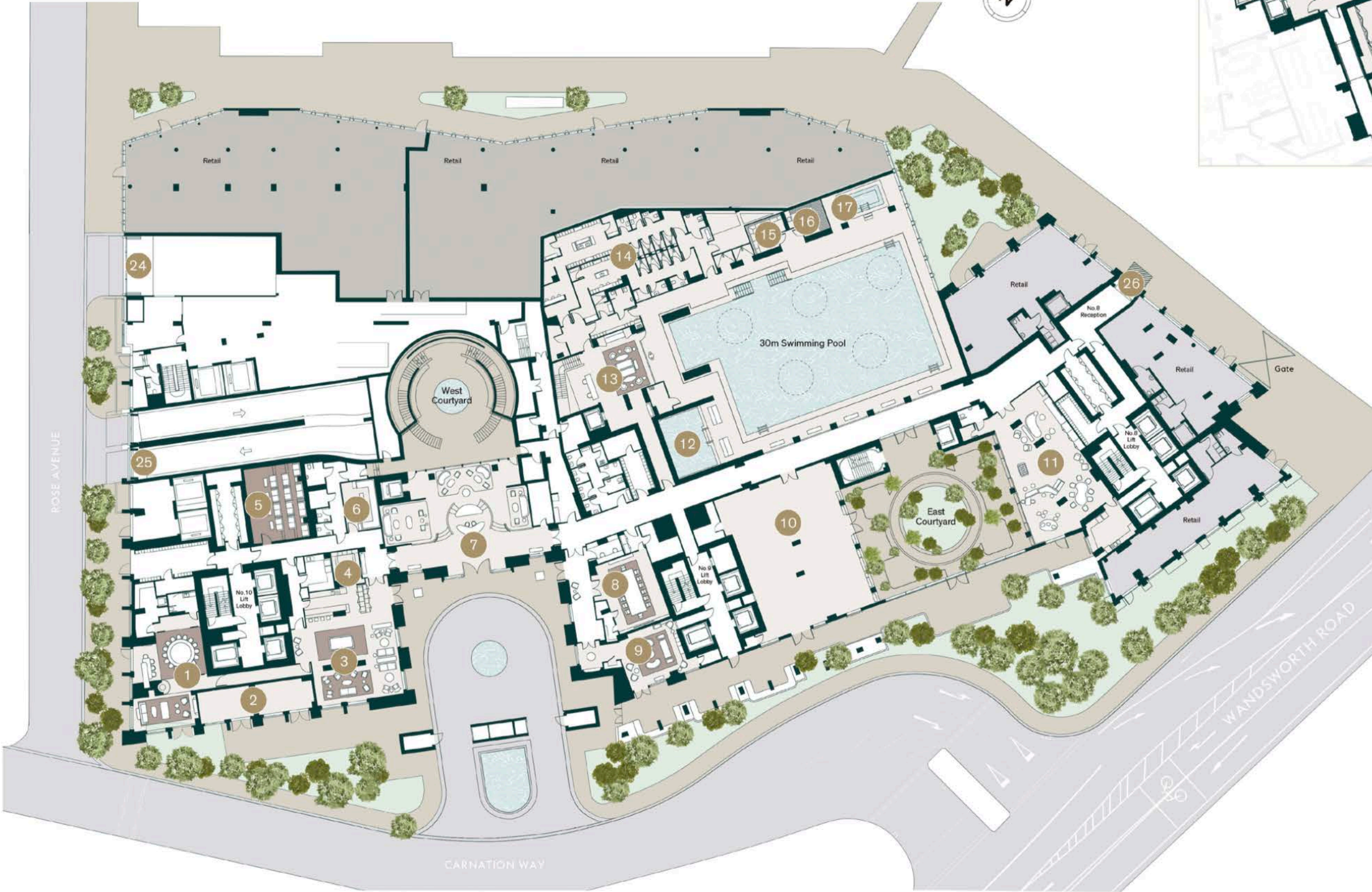
THE CALM



The lifestyle on offer at Building No.8 will be exceptional. Amenities will include a gymnasium, yoga studio, swimming pool and spa. There will be a cosy library, wine and cigar bar, screening room and a private dining room and lounge area for entertaining friends, family and colleagues. Finally the jewel in the crown will be Lounge 39, with its stunning views over London.

AMENITIES PLAN

OVER 6,400 SQ M OF AMENITIES PROVIDE OPPORTUNITIES TO RELAX, ENTERTAIN OR TO WORKOUT ANY TIME YOU WISH.



LOWER GROUND LEVEL

- 1 PRIVATE LOUNGE
- 2 WINE AND CIGAR BAR
- 3 BAR/LOUNGE AREA
- 4 WINE CELLAR
- 5 CINEMA
- 6 KTV ROOM
- 7 ENTRANCE LOBBY
- 8 CONFERENCE ROOM
- 9 LIBRARY
- 10 ART GALLERY
- 11 KIDS' CLUB
- 12 KIDS' POOL
- 13 SPA RECEPTION
- 14 CHANGING ROOMS
- 15 STEAM ROOM
- 16 DRY SAUNA
- 17 JACUZZI
- 18 YOGA STUDIO
- 19 GYM
- 20 PRIVATE STUDIOS
- 21 HAIR & NAIL SALON
- 22 RELAXATION ROOM
- 23 TREATMENT ROOM
- 24 REFUSE COLLECTION POINT
- 25 CARPARK RAMP
- 26 DROP OFF POINT

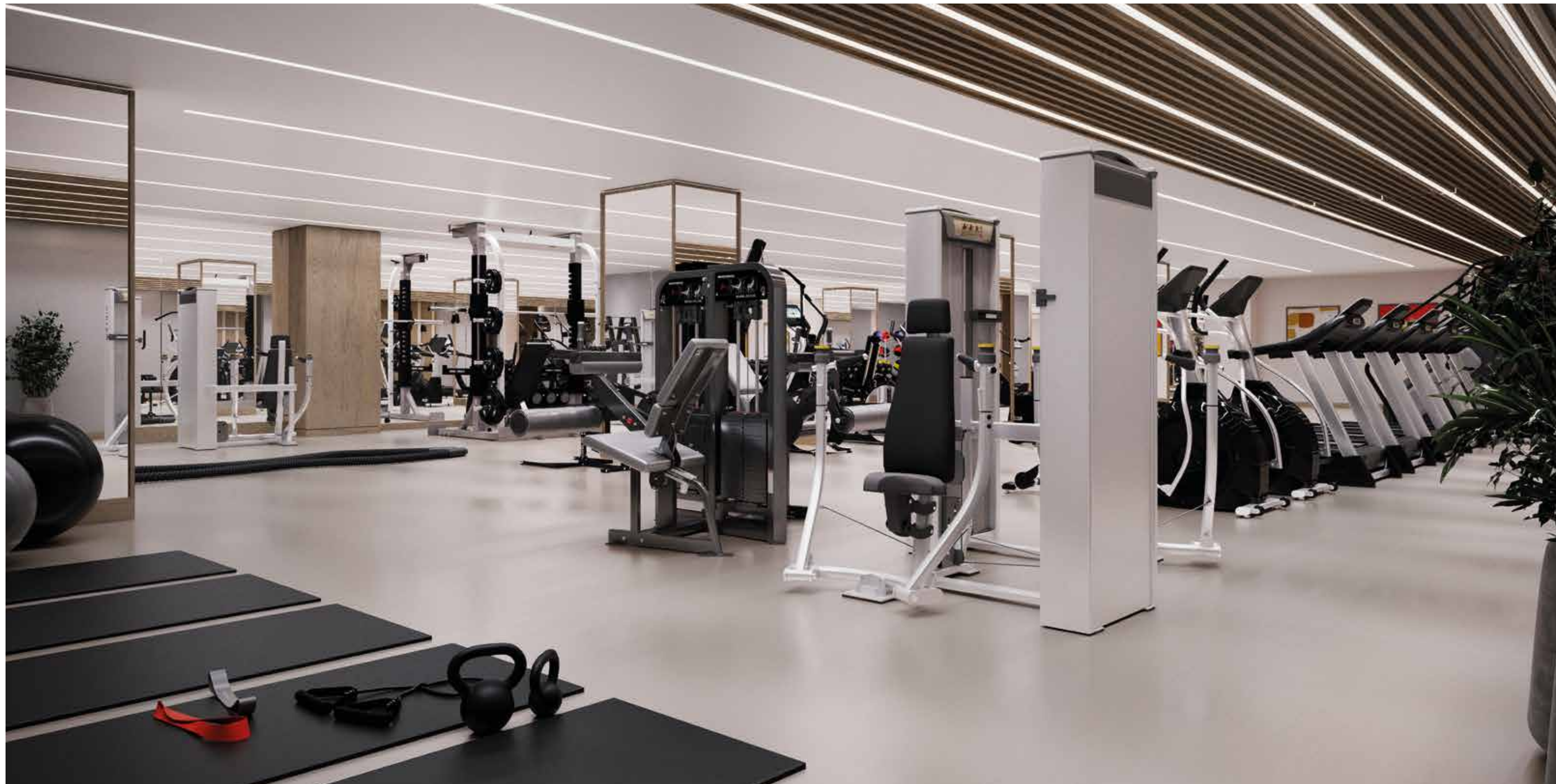
GROUND LEVEL

Plan is indicative only

THE POOL

Natural light will flood into the 30-metre pool through the thoughtfully placed concentric skylights above. Living walls and exotic plants will bring a tropical feel to the space – a true haven to enjoy.





STATE-OF-THE-ART GYMNASIUM

Situated on the lower ground floor there will be a comprehensive gym, fully equipped with the latest sports equipment. The spacious yoga studio will host regular yoga classes and the treatment rooms will be available to book for that much needed 'me' time.



The cinema offers residents of Thames City an opportunity to fully escape from reality.

PRIVATE DINING

Whether you're hosting a business lunch or a celebration with family and friends, the private dining service at Thames City can meet your needs, with its offering of beautiful surroundings, exquisite menus and finest wines.

THE CINEMA

The private cinema exclusively for residents is the ultimate in luxury entertainment, just moments from your door. Whether it's an anniversary you're celebrating or a great night in with friends, we can deliver a classic cinema experience and the movie to match.





THE LIBRARY

The library is a comforting antidote to a hectic day, with muted colours and a restful ambience that encourage you to switch off and unwind.

WINE AND CIGAR BAR

The wine bar and library will be places for relaxation, somewhere to savour a fine cigar with a dram of whiskey, meet new people, make connections and enjoy some pleasant conversation.



LOUNGE 39

Being able to enjoy a drink with friends as the sun sets over an iconic capital city has to be one of life's true pleasures. The private residents lounge on level 39 will be the perfect place to do so.

THE APARTMENTS — WHERE EVERYTHING HAS BEEN THOUGHTFULLY CONSIDERED

Admirable views, to the east and to the west along the river, can be found in many of the homes at Thames City, whether you choose a one-bedroom luxury apartment or a grand five-bedroom home.



STUNNING LIVING SPACES

Spacious, open-plan living lets you create both intimate and statement zones, whether you're enjoying your home alone, as a family or entertaining. Stylish design details and light-filled rooms, enhanced by floor-to-ceiling windows, make these stunning environments.





THE SPECIFICATION

KITCHENS

- Bespoke fully-fitted kitchens including wall and base cabinets
- Composite stone worktops
- Stainless steel splashback
- Undermounted stainless steel sink featuring single lever mixer tap
- Under cabinet lighting on wall-mounted cabinets
- Pop-up socket where applicable
- Fully integrated appliances including:
 - Miele oven
 - Miele microwave oven
 - Miele induction hob
 - Siemens or similar fridge/freezer
 - Siemens or similar dishwasher
 - Siemens or similar extractor fan
 - Wine cooler

UTILITY CUPBOARDS

- Siemens or similar washer/dryer
- Mechanical ventilation with heat recovery (MVHR)
- Heat interface unit/cooling interface unit with energy meter to provide domestic hot water and comfort cooling
- Underfloor heating manifold

BATHROOMS AND ENSUITES

- Marble finish to walls
- Marble finish to floors
- Marble-topped vanity units
- Built-in bathtub with marble trim and fascia
- Heated towel bars
- Wall-mounted Duravit WC with concealed cistern and soft close lid with dual flush plate
- White Duravit undermounted or wall-mounted wash basin where applicable
- Walk-in shower units with rain shower and wall-mounted shower set (four-piece bathrooms)
- Wall-mounted shower sets (three-piece bathrooms)
- Wall mounted mirror cabinet with under cabinet lighting
- Thermostat-controlled mixer taps throughout (Hansgrohe or similar)

WARDROBES

- Fully integrated wardrobes to primary and second bedrooms
- Integrated linear lighting

WALL AND FLOOR FINISHES

- Engineered timber floors to living and dining rooms, kitchens, and hallways
- Luxury carpet to bedrooms
- White painted finish to walls

HEATING, COOLING AND HOT WATER

- Comfort cooling to all habitable rooms
- Underfloor heating throughout
- Separate temperature control to lounge, kitchen and bedrooms via panel located in utility cupboard

ELECTRICAL FITTINGS

- Home automation systems to include heating and lighting
- Coffered ceilings with feature lighting to all living spaces
- Fully installed blind boxes pre-wired to allow for homeowner installation of automated blind system
- Adjustable mood lighting throughout
- Automated under cabinet lighting to all bathrooms
- Antique brass finish to all switches and sockets
- Access to lighting control and heating and comfort

TELECOMMUNICATIONS

- Antique brass finish to visible media plates
- Wiring for satellite/cable and terrestrial Freeview television
- TV outlet to living area and bedrooms
- Telephone outlet with broadband capability to living area and bedrooms
- Fibre optic infrastructure to all apartments

SECURITY AND PEACE OF MIND

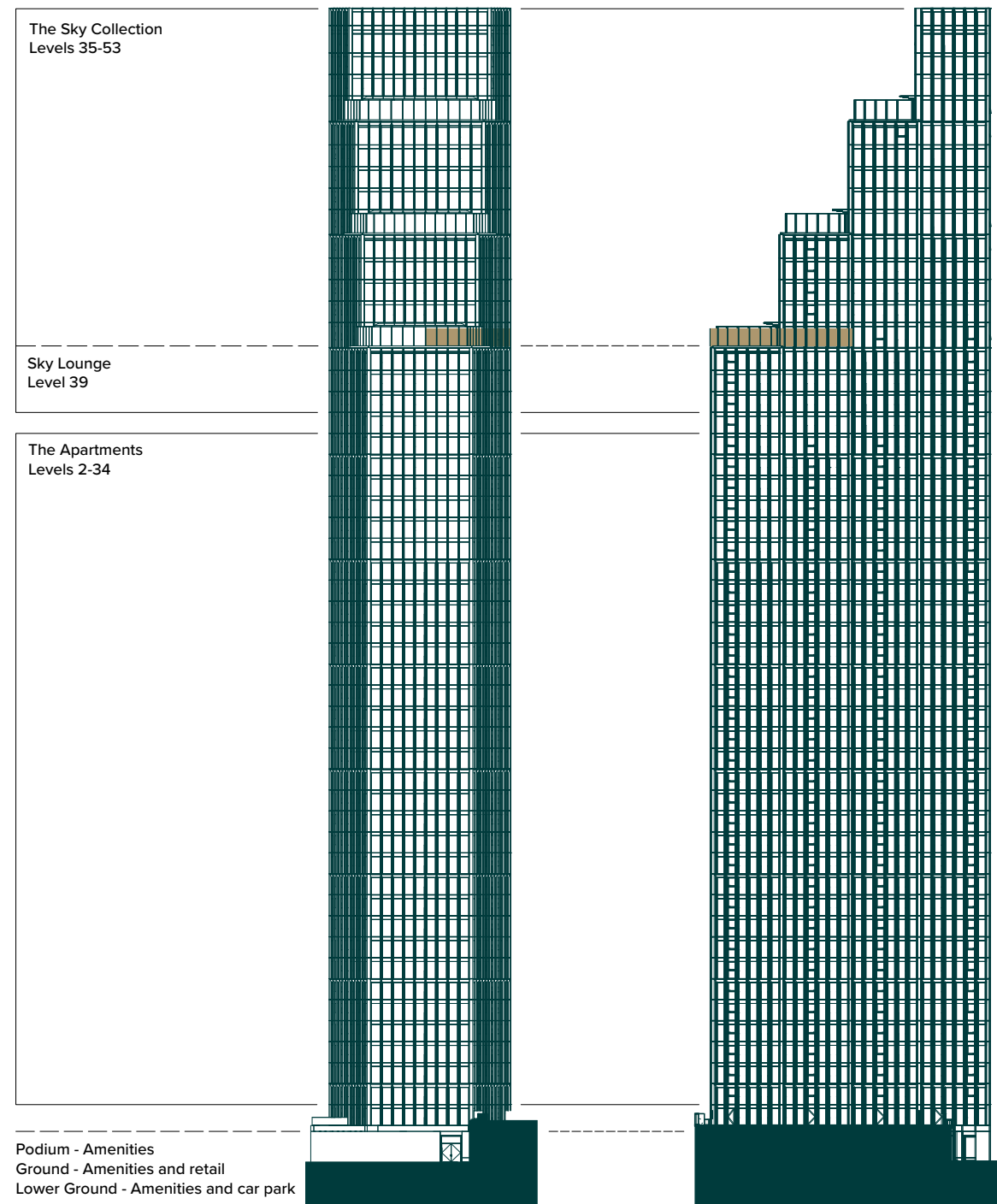
- Sprinklers throughout
- Mains supply operated smoke/heat detectors with battery back up
- Secure solid wood external doors with multi-point locking
- 24-hour concierge
- 10-year buildmark warranty

FAÇADE SYSTEM

- Triple glazed low iron full height glazing with internal bronze PPC
- Full height sliding door to living rooms with Juliet balcony

Specifications are upgraded for the sky collection.

ELEVATIONS



BUILDING NO.8

FLOORPLATES

Level 02

Apartment 02.01

3 bedroom	92.23 sq m/993 sq ft	
Kitchen/living/dining	5.81 × 5.44m	19' 1" × 17' 10"
Primary bedroom	3.14 × 2.79m	10' 4" × 9' 2"
Bedroom 2	3.01 × 2.88m	9' 11" × 9' 6"
Bedroom 3	3.11 × 2.30m	10' 2" × 7' 7"

Apartment 02.02

2 bedroom	80.83 sq m/870 sq ft	
Terrace	16.7 sq m/180.2 sq ft	
Kitchen/living/dining	6.90 × 3.84m	22' 8" × 12' 7"
Primary bedroom	5.94 × 3.02m	19' 6" × 9' 11"
Bedroom 2	3.94 × 2.76m	12' 11" × 9' 1"

Apartment 02.03

1 bedroom	74.64 sq m/803 sq ft	
Terrace	35.7 sq m/384.0 sq ft	
Kitchen/living/dining	6.64 × 5.60m	21' 9" × 18' 4"
Primary bedroom	4.75 × 2.79m	15' 7" × 9' 2"

Apartment 02.04

3 bedroom	95.63 sq m/1,029 sq ft	
Kitchen/living/dining	5.46 × 3.70m	17' 11" × 12' 2"
Primary bedroom	3.60 × 3.18m	11' 10" × 10' 5"
Bedroom 2	3.05 × 2.88m	10' 0" × 9' 6"
Bedroom 3	2.81 × 2.80m	9' 3" × 9' 2"

Apartment 02.05

3 bedroom	92.67 sq m/997 sq ft	
Terrace	38.8 sq m/417.2 sq ft	
Kitchen/living/dining	5.41 × 3.97m	17' 9" × 13' 0"
Primary bedroom	3.75 × 2.93m	12' 3" × 9' 7"
Bedroom 2	2.89 × 2.86m	9' 6" × 9' 5"
Bedroom 3	2.81 × 2.80m	9' 3" × 9' 2"

Apartment 02.06

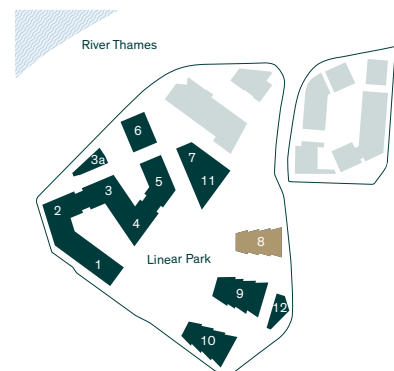
1 bedroom	69.73 sq m/751 sq ft	
Terrace	56.4 sq m/606.9 sq ft	
Kitchen/living/dining	6.60 × 4.44m	21' 8" × 14' 7"
Primary bedroom	4.06 × 2.79m	13' 4" × 9' 2"

Apartment 02.07

2 bedroom	81.46 sq m/877 sq ft	
Terrace	46.2 sq m/496.9 sq ft	
Kitchen/living/dining	6.94 × 3.84m	22' 9" × 12' 7"
Primary bedroom	6.00 × 2.79m	19' 8" × 9' 2"
Bedroom 2	3.97 × 2.76m	13' 0" × 9' 1"

Apartment 02.08

2 bedroom	79.67 sq m/858 sq ft	
Terrace	44.9 sq m/483.1 sq ft	
Kitchen/living/dining	6.60 × 3.67m	21' 8" × 12' 1"
Primary bedroom	3.09 × 2.79m	10' 1" × 9' 2"
Bedroom 2	3.27 × 2.82m	10' 9" × 9' 3"



Building No.8

Levels 03 – 09



Apartment 03.01 – 09.01

3 bedroom	92.77 sq m/999 sq ft	
Kitchen/living/dining	5.81 × 5.44m	19' 1" × 17' 10"
Primary bedroom	3.14 × 2.79m	10' 4" × 9' 2"
Bedroom 2	3.01 × 2.88m	9' 11" × 9' 6"
Bedroom 3	3.06 × 2.30m	10' 1" × 7' 7"

Apartment 03.02 – 09.02

2 bedroom	81.12 sq m/873 sq ft	
Kitchen/living/dining	6.90 × 3.84m	22' 8" × 12' 7"
Primary bedroom	6.05 × 3.02m	19' 10" × 9' 11"
Bedroom 2	3.38 × 2.76m	11' 1" × 9' 1"

Apartment 03.03 – 09.03

1 bedroom	74.57 sq m/803 sq ft	
Kitchen/living/dining	6.64 × 5.60m	21' 9" × 18' 4"
Primary bedroom	4.75 × 2.79m	15' 7" × 9' 2"

Apartment 03.04 – 09.04

3 bedroom	95.44 sq m/1,027 sq ft	
Kitchen/living/dining	5.46 × 3.70m	17' 11" × 12' 2"
Primary bedroom	3.60 × 3.18m	11' 10" × 10' 5"
Bedroom 2	3.05 × 2.88m	10' 0" × 9' 6"
Bedroom 3	2.81 × 2.80m	9' 3" × 9' 2"

Apartment 03.05 – 09.05

3 bedroom	92.86 sq m/1,000 sq ft	
Kitchen/living/dining	5.41 × 3.97m	17' 9" × 13' 0"
Primary bedroom	3.70 × 2.93m	12' 2" × 9' 7"
Bedroom 2	2.89 × 2.86m	9' 6" × 9' 5"
Bedroom 3	2.81 × 2.80m	9' 3" × 9' 2"

Apartment 03.06 – 09.06

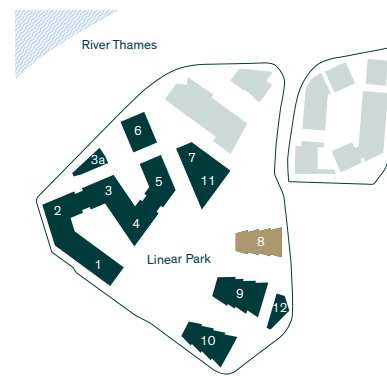
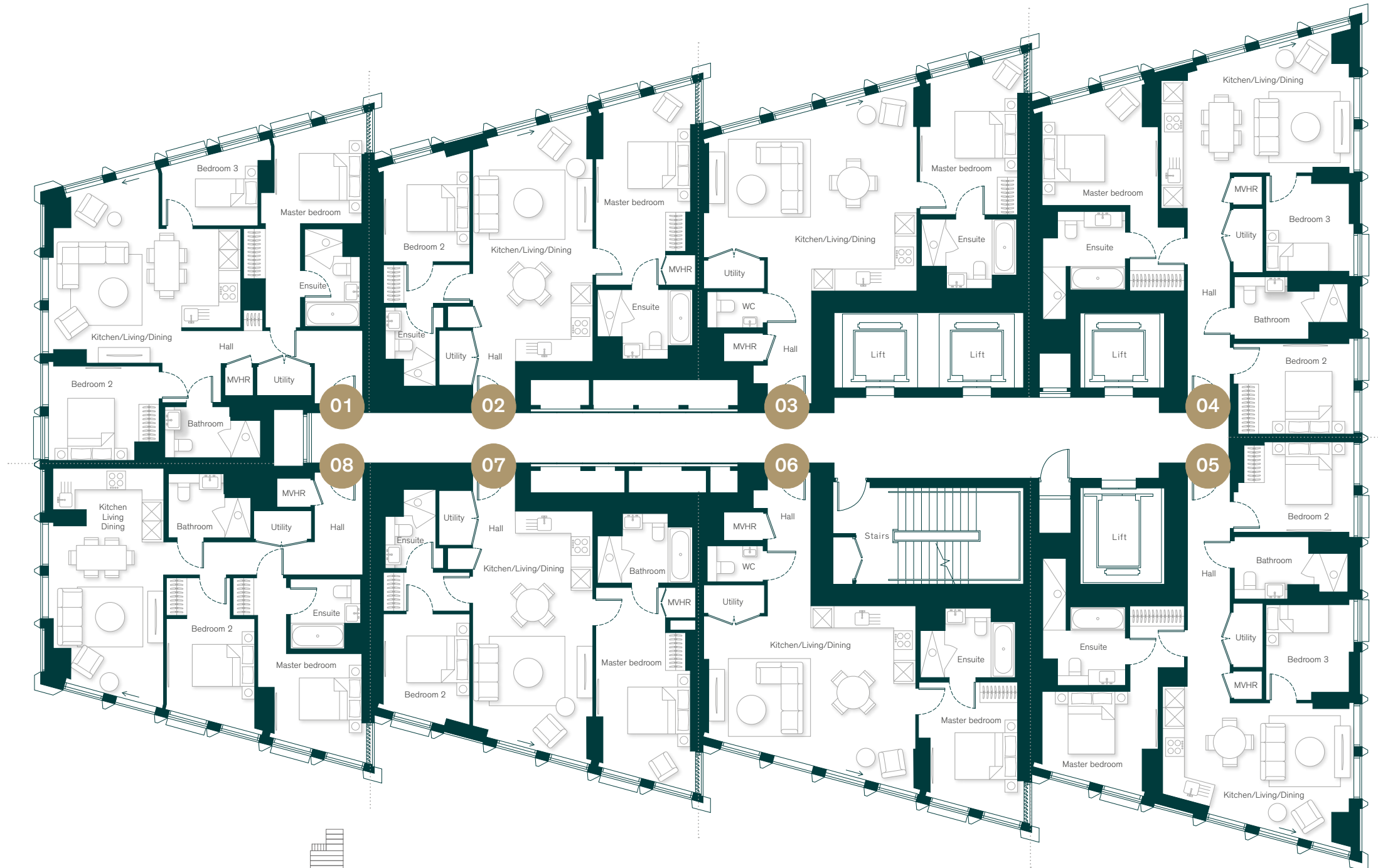
1 bedroom	70.58 sq m/760 sq ft	
Kitchen/living/dining	6.60 × 4.43m	21' 8" × 14' 6"
Primary bedroom	4.06 × 2.79m	13' 4" × 9' 2"

Apartment 03.07 – 09.07

2 bedroom	82.16 sq m/884 sq ft	
Kitchen/living/dining	6.94 × 3.84m	22' 9" × 12' 7"
Primary bedroom	6.11 × 2.79m	20' 0" × 9' 2"
Bedroom 2	3.41 × 2.76m	11' 2" × 9' 1"

Apartment 03.08 – 09.08

2 bedroom	80.04 sq m/862 sq ft	
Kitchen/living/dining	6.60 × 3.67m	21' 8" × 12' 1"
Primary bedroom	3.09 × 2.79m	10' 1" × 9' 2"
Bedroom 2	3.27 × 2.82m	10' 9" × 9' 3"



Levels 10 – 19



Apartment 10.01 – 19.01

3 bedroom	93.59 sq m/1,007 sq ft	
Kitchen/living/dining	5.81 × 5.44m	19' 1" × 17' 10"
Primary bedroom	3.14 × 2.84m	10' 4" × 9' 4"
Bedroom 2	3.01 × 2.88m	9' 11" × 9' 6"
Bedroom 3	3.06 × 2.30m	10' 1" × 7' 7"

Apartment 10.02 – 19.02

2 bedroom	82.9 sq m/892 sq ft	
Kitchen/living/dining	6.90 × 3.84m	22' 8" × 12' 7"
Primary bedroom	6.05 × 3.02m	19' 10" × 9' 11"
Bedroom 2	3.38 × 2.81m	11' 1" × 9' 3"

Apartment 10.03 – 19.03

1 bedroom	75.66 sq m/814 sq ft	
Kitchen/living/dining	6.64 × 5.60m	21' 9" × 18' 4"
Primary bedroom	4.75 × 2.79m	15' 7" × 9' 2"

Apartment 10.04 – 19.04

3 bedroom	96.41 sq m/1,038 sq ft	
Kitchen/living/dining	5.46 × 3.70m	17' 11" × 12' 2"
Primary bedroom	3.60 × 3.18m	11' 10" × 10' 5"
Bedroom 2	3.05 × 2.88m	10' 0" × 9' 6"
Bedroom 3	2.81 × 2.80m	9' 3" × 9' 2"

Apartment 10.05 – 19.05

3 bedroom	93.63 sq m/1,008 sq ft	
Kitchen/living/dining	5.41 × 3.97m	17' 9" × 13' 0"
Primary bedroom	3.70 × 2.93m	12' 2" × 9' 7"
Bedroom 2	2.89 × 2.86m	9' 6" × 9' 5"
Bedroom 3	2.81 × 2.80m	9' 3" × 9' 2"

Apartment 10.06 – 19.06

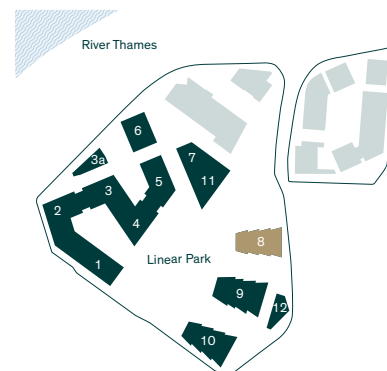
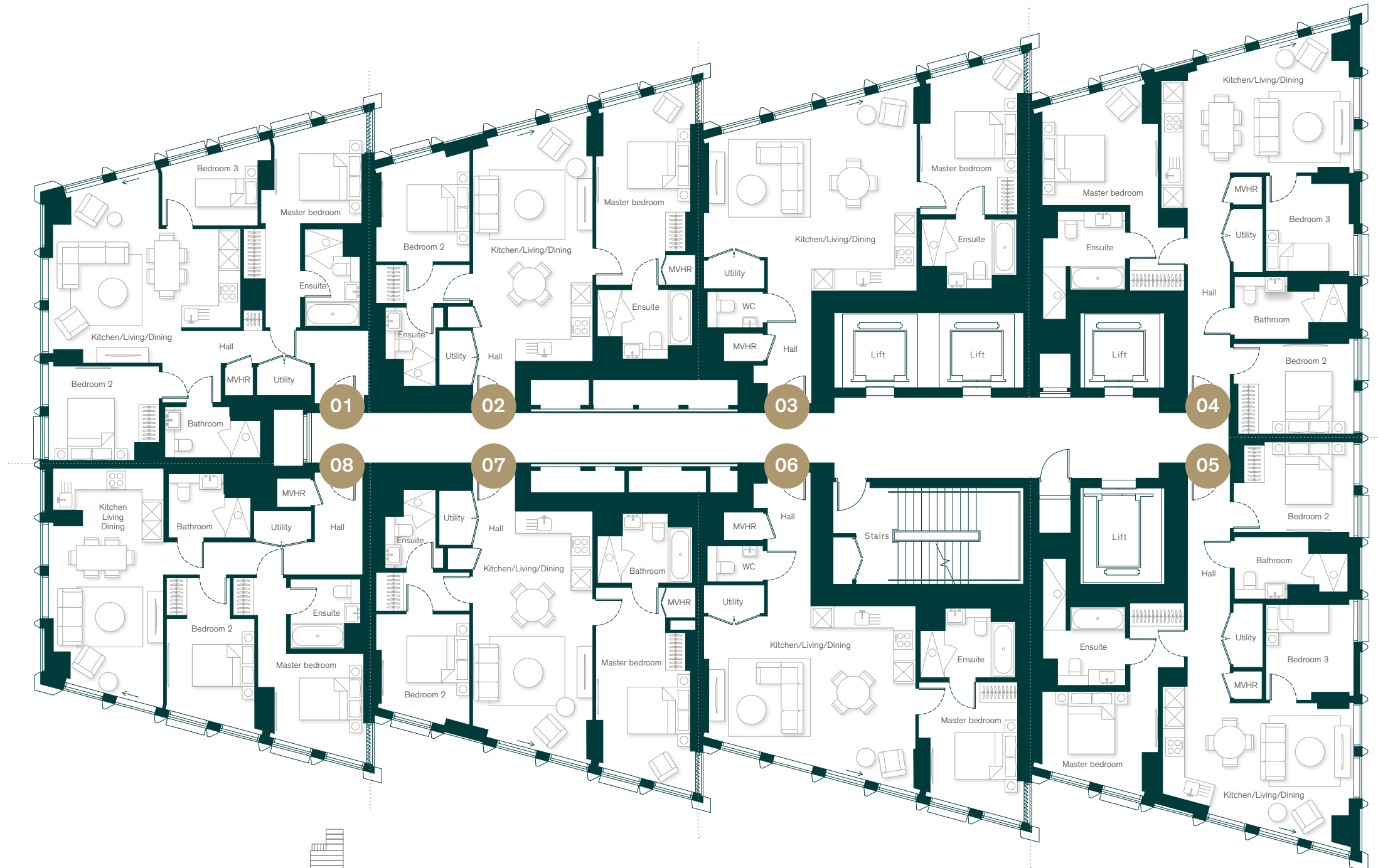
1 bedroom	71.28 sq m/767 sq ft	
Kitchen/living/dining	6.60 × 4.54m	21' 8" × 14' 11"
Primary bedroom	4.06 × 2.79m	13' 4" × 9' 2"

Apartment 10.07 – 19.07

2 bedroom	83.62 sq m/900 sq ft	
Kitchen/living/dining	7.04 × 3.84m	23' 1" × 12' 7"
Primary bedroom	6.11 × 2.79m	20' 0" × 9' 2"
Bedroom 2	3.41 × 2.98m	11' 2" × 9' 9"

Apartment 10.08 – 19.08

2 bedroom	80.87 sq m/870 sq ft	
Kitchen/living/dining	6.60 × 3.67m	21' 8" × 12' 1"
Primary bedroom	3.09 × 2.84m	10' 1" × 9' 4"
Bedroom 2	3.27 × 2.82m	10' 9" × 9' 3"



Levels 20 – 27



Apartment 20.01 – 27.01

3 bedroom	94.37 sq m/1,016 sq ft	
Kitchen/living/dining	5.81 × 5.44m	19' 1" × 17' 10"
Primary bedroom	3.14 × 2.84m	10' 4" × 9' 4"
Bedroom 2	3.01 × 2.88m	9' 11" × 9' 6"
Bedroom 3	3.06 × 2.30m	10' 1" × 7' 7"

Apartment 20.02 – 27.02

2 bedroom	83.09 sq m/894 sq ft	
Kitchen/living/dining	7.00 × 3.84m	22' 12" × 12' 7"
Primary bedroom	6.05 × 3.02m	19' 10" × 9' 11"
Bedroom 2	3.38 × 2.81m	11' 1" × 9' 3"

Apartment 20.03 – 27.03

1 bedroom	76.66 sq m/825 sq ft	
Kitchen/living/dining	6.64 × 5.70m	21' 9" × 18' 8"
Primary bedroom	4.75 × 2.89m	15' 7" × 9' 6"

Apartment 20.04 – 27.04

3 bedroom	97.73 sq m/1,052 sq ft	
Kitchen/living/dining	5.46 × 3.70m	17' 11" × 12' 2"
Primary bedroom	3.60 × 3.28m	11' 10" × 10' 9"
Bedroom 2	3.05 × 2.88m	10' 0" × 9' 6"
Bedroom 3	2.81 × 2.80m	9' 3" × 9' 2"

Apartment 20.05 – 27.05

3 bedroom	95.15 sq m/1,024 sq ft	
Kitchen/living/dining	5.41 × 3.97m	17' 9" × 13' 0"
Primary bedroom	3.80 × 2.93m	12' 6" × 9' 7"
Bedroom 2	2.89 × 2.86m	9' 6" × 9' 5"
Bedroom 3	2.81 × 2.80m	9' 3" × 9' 2"

Apartment 20.06 – 27.06

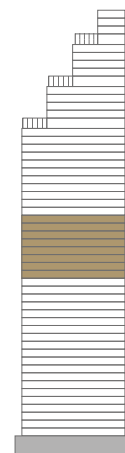
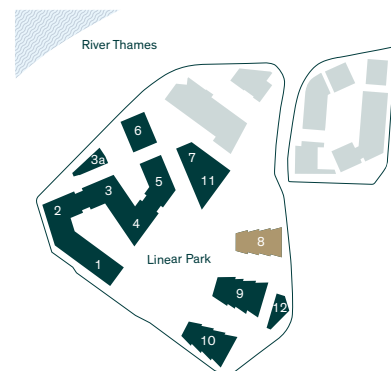
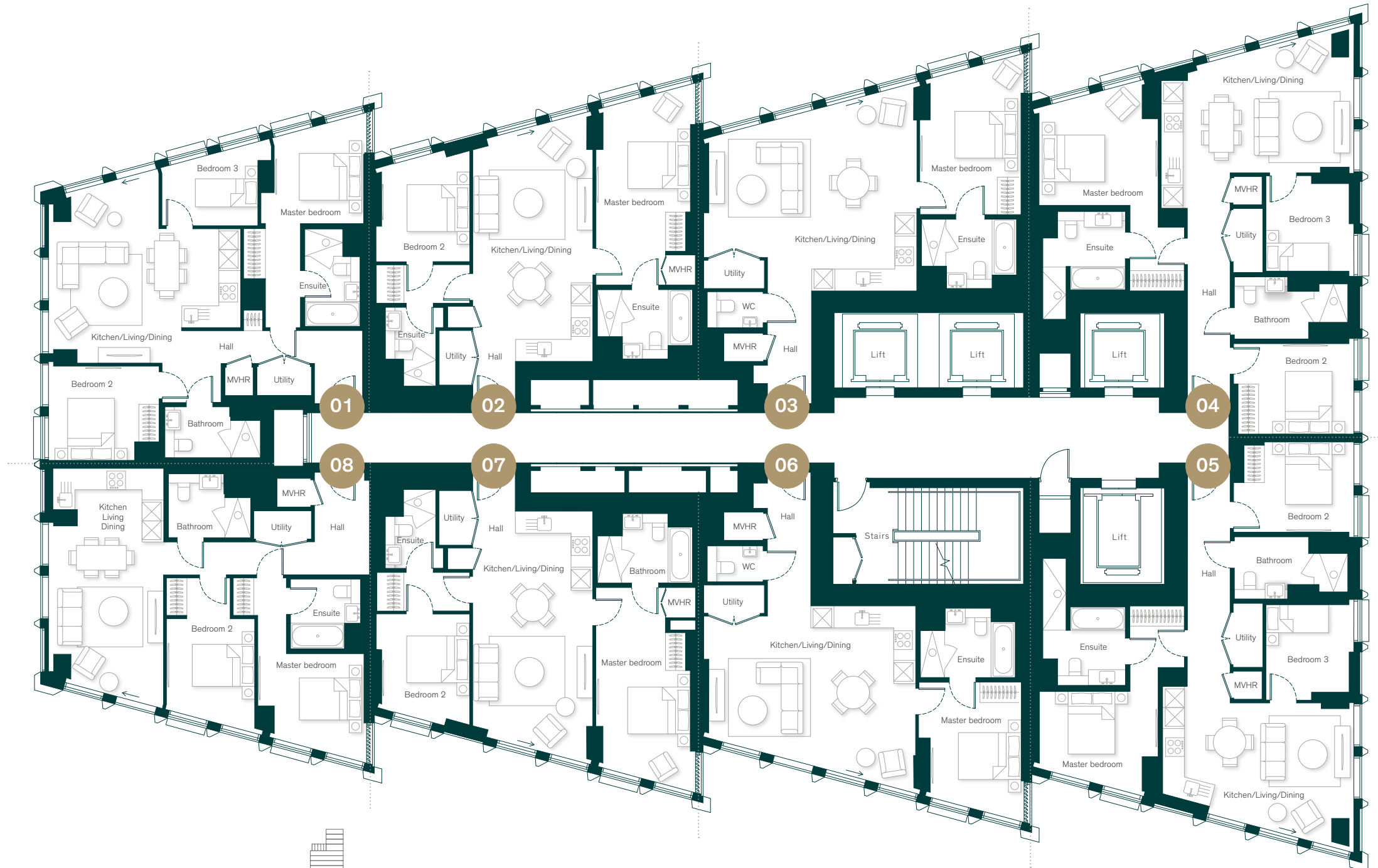
1 bedroom	72.16 sq m/777 sq ft	
Kitchen/living/dining	6.60 × 4.54m	21' 8" × 14' 11"
Primary bedroom	4.06 × 2.89m	13' 4" × 9' 6"

Apartment 20.07 – 27.07

2 bedroom	83.86 sq m/903 sq ft	
Kitchen/living/dining	7.04 × 3.84m	23' 1" × 12' 7"
Primary bedroom	6.11 × 2.79m	20' 0" × 9' 2"
Bedroom 2	3.41 × 2.98m	11' 2" × 9' 9"

Apartment 20.08 – 27.08

2 bedroom	82 sq m/883 sq ft	
Kitchen/living/dining	6.60 × 3.67m	21' 8" × 12' 1"
Primary bedroom	3.09 × 2.84m	10' 1" × 9' 4"
Bedroom 2	3.27 × 2.82m	10' 9" × 9' 3"



Levels 28 – 34



Apartment 28.01 - 34.01

3 bedroom	94.49 sq m/1,017 sq ft	
Kitchen/living/dining	5.81 × 5.44m	19' 1" × 17' 10"
Primary bedroom	3.14 × 2.84m	10' 4" × 9' 4"
Bedroom 2	3.01 × 2.88m	9' 11" × 9' 6"
Bedroom 3	3.06 × 2.30m	10' 1" × 7' 7"

Apartment 28.02 - 34.02

2 bedroom	86.3 sq m/929 sq ft	
Kitchen/living/dining	8.24 × 3.84m	27' 1" × 12' 7"
Primary bedroom	6.05 × 3.02m	19' 10" × 9' 11"
Bedroom 2	3.38 × 2.81m	11' 1" × 9' 3"

Apartment 28.03 - 34.03

1 bedroom	78.26 sq m/842 sq ft	
Kitchen/living/dining	6.64 × 5.80m	21' 9" × 19' 0"
Primary bedroom	4.75 × 2.89m	15' 7" × 9' 6"

Apartment 28.04 - 34.04

3 bedroom	99.21 sq m/1,068 sq ft	
Kitchen/living/dining	5.46 × 3.70m	17' 11" × 12' 2"
Primary bedroom	3.60 × 3.28m	11' 10" × 10' 9"
Bedroom 2	3.05 × 2.89m	10' 0" × 9' 6"
Bedroom 3	2.81 × 2.80m	9' 3" × 9' 2"

Apartment 28.05 - 34.05

3 bedroom	96.11 sq m/1,035 sq ft	
Kitchen/living/dining	5.41 × 3.97m	17' 9" × 13' 0"
Primary bedroom	3.8 × 2.93m	12' 6" × 9' 7"
Bedroom 2	2.89 × 2.86m	9' 6" × 9' 5"
Bedroom 3	2.81 × 2.80m	9' 3" × 9' 2"

Apartment 28.06 - 34.06

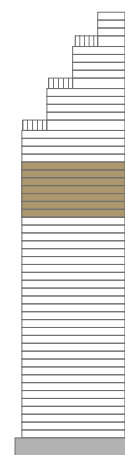
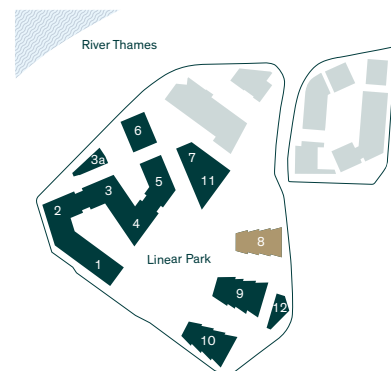
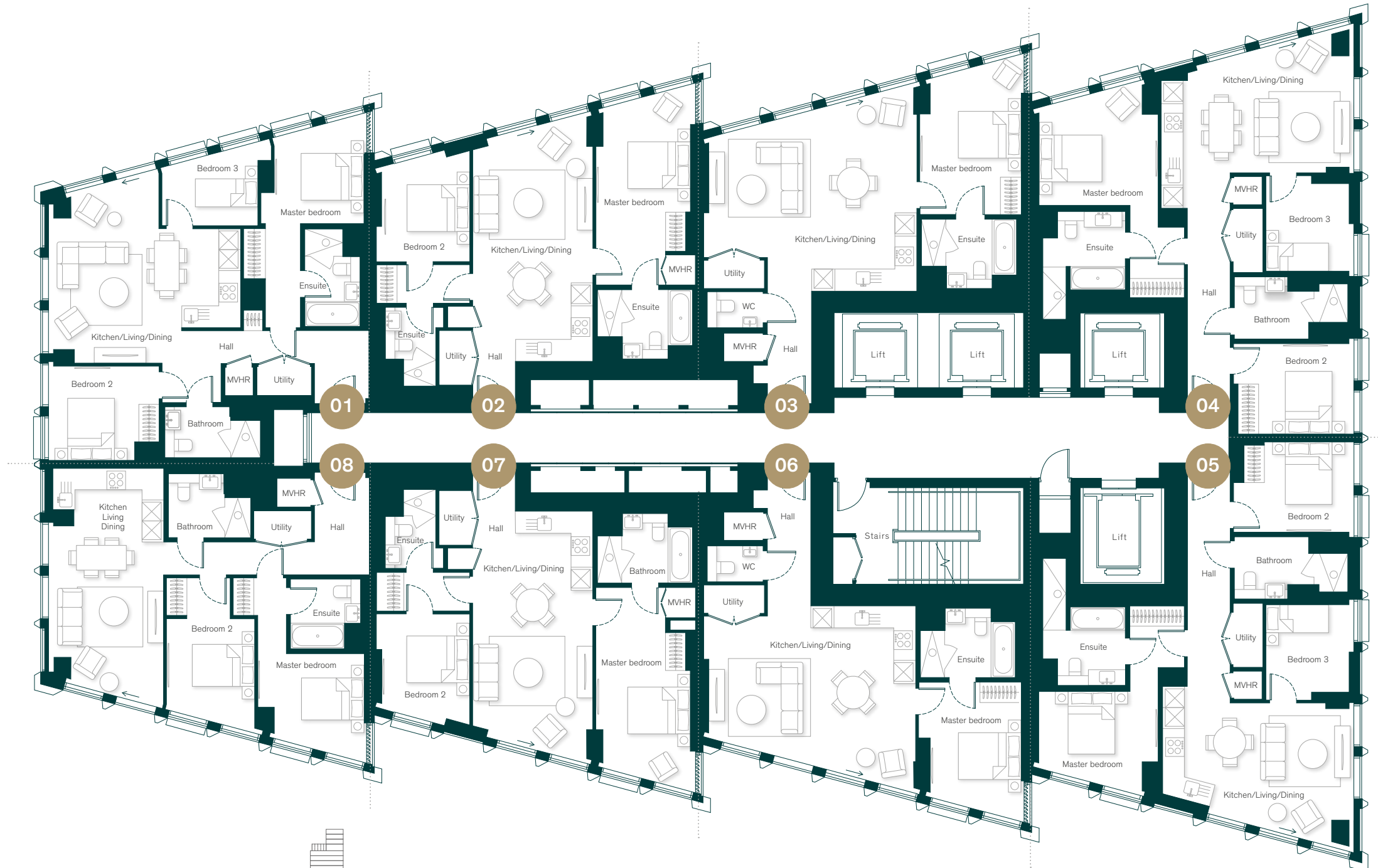
1 bedroom	73.48 sq m/791 sq ft	
Kitchen/living/dining	6.60 × 4.54m	21' 8" × 14' 11"
Primary bedroom	4.06 × 2.89m	13' 4" × 9' 6"

Apartment 28.07 - 34.07

2 bedroom	84.76 sq m/912 sq ft	
Kitchen/living/dining	7.14 × 3.84m	23' 5" × 12' 7"
Primary bedroom	6.11 × 2.79m	20' 0" × 9' 2"
Bedroom 2	3.41 × 2.98m	11' 2" × 9' 9"

Apartment 28.08 - 34.08

2 bedroom	82.15 sq m/884 sq ft	
Kitchen/living/dining	6.60 × 3.67m	21' 8" × 12' 1"
Primary bedroom	3.09 × 2.84m	10' 1" × 9' 4"
Bedroom 2	3.27 × 2.82m	10' 9" × 9' 3"



Level 35

Apartment 35.01

4 bedroom	266.95 sq m/2,873 sq ft	
Kitchen/living/dining	9.46 × 6.80m	31' 0" × 22' 4"
Primary bedroom	5.16 × 4.12m	16' 11" × 13' 6"
Bedroom 2	3.55 × 2.79m	11' 8" × 9' 2"
Bedroom 3	3.60 × 3.44m	11' 10" × 11' 3"
Bedroom 4	3.80 × 3.35m	12' 6" × 10' 12"
Bedroom 5	5.78 × 2.87m	18' 12" × 9' 5"

Apartment 35.02

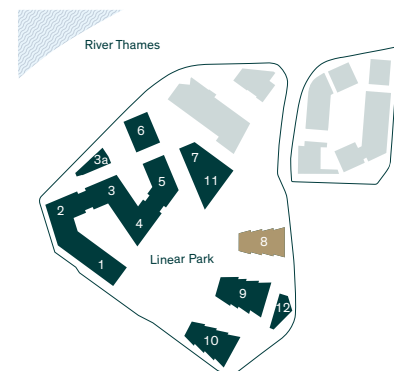
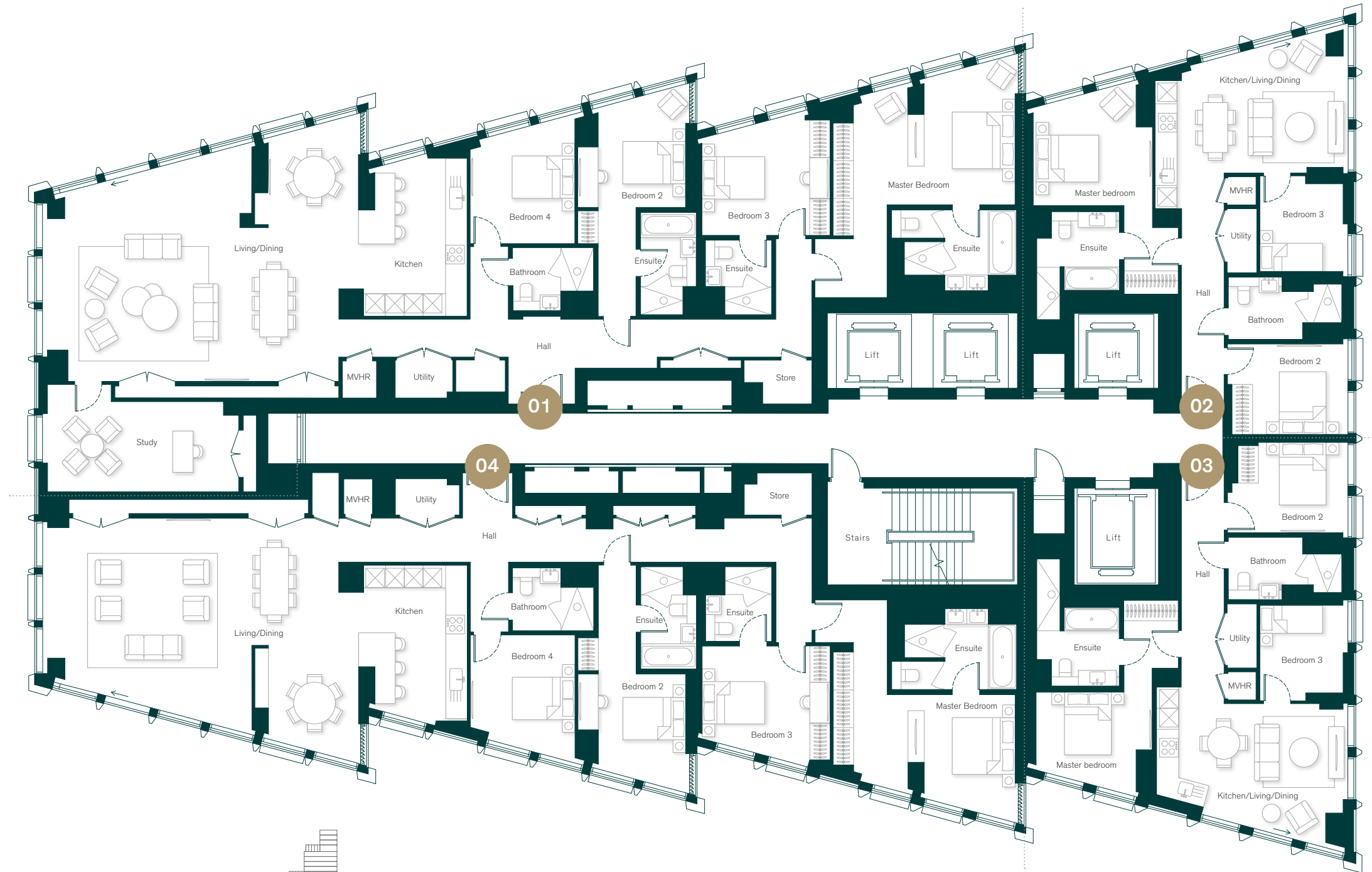
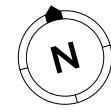
3 bedroom	98.78 sq m/1,063 sq ft	
Kitchen/living/dining	5.46 × 3.70m	17' 11" × 12' 2"
Primary bedroom	3.60 × 3.28m	11' 10" × 10' 9"
Bedroom 2	3.05 × 2.88m	10' 0" × 9' 6"
Bedroom 3	2.81 × 2.80m	9' 3" × 9' 2"

Apartment 35.03

3 bedroom	96.02 sq m/1,034 sq ft	
Kitchen/living/dining	5.41 × 3.97m	17' 9" × 13' 0"
Primary bedroom	3.85 × 2.94m	12' 7" × 9' 8"
Bedroom 2	2.89 × 2.86m	9' 6" × 9' 5"
Bedroom 3	2.81 × 2.80m	9' 3" × 9' 2"

Apartment 35.04

4 bedroom	236.64 sq m/2,547 sq ft	
Kitchen/living/dining	9.46 × 6.07m	31' 0" × 19' 11"
Primary bedroom	5.16 × 3.41m	16' 11" × 11' 2"
Bedroom 2	3.37 × 2.79m	11' 1" × 9' 2"
Bedroom 3	3.44 × 3.43m	11' 3" × 11' 3"
Bedroom 4	3.74 × 3.35m	12' 3" × 10' 12"



Levels 36 – 37



Apartment 36.01 – 37.01

4 bedroom	262.44 sq m/2,825 sq ft	
Kitchen/living/dining	9.46 × 6.80m	31' 0" × 22' 4"
Primary bedroom	5.16 × 4.12m	16' 11" × 13' 6"
Bedroom 2	3.55 × 2.79m	11' 8" × 9' 2"
Bedroom 3	3.60 × 3.44m	11' 10" × 11' 3"
Bedroom 4	3.80 × 3.35m	12' 6" × 10' 12"
Bedroom 5	4.95 × 2.98m	16' 3" × 9' 9"

Apartment 36.02 – 37.02

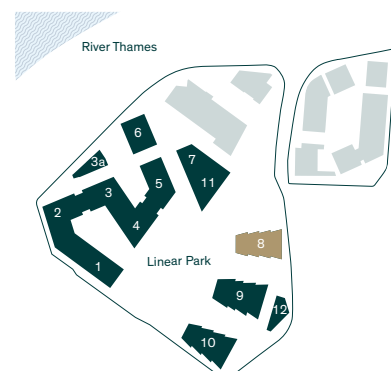
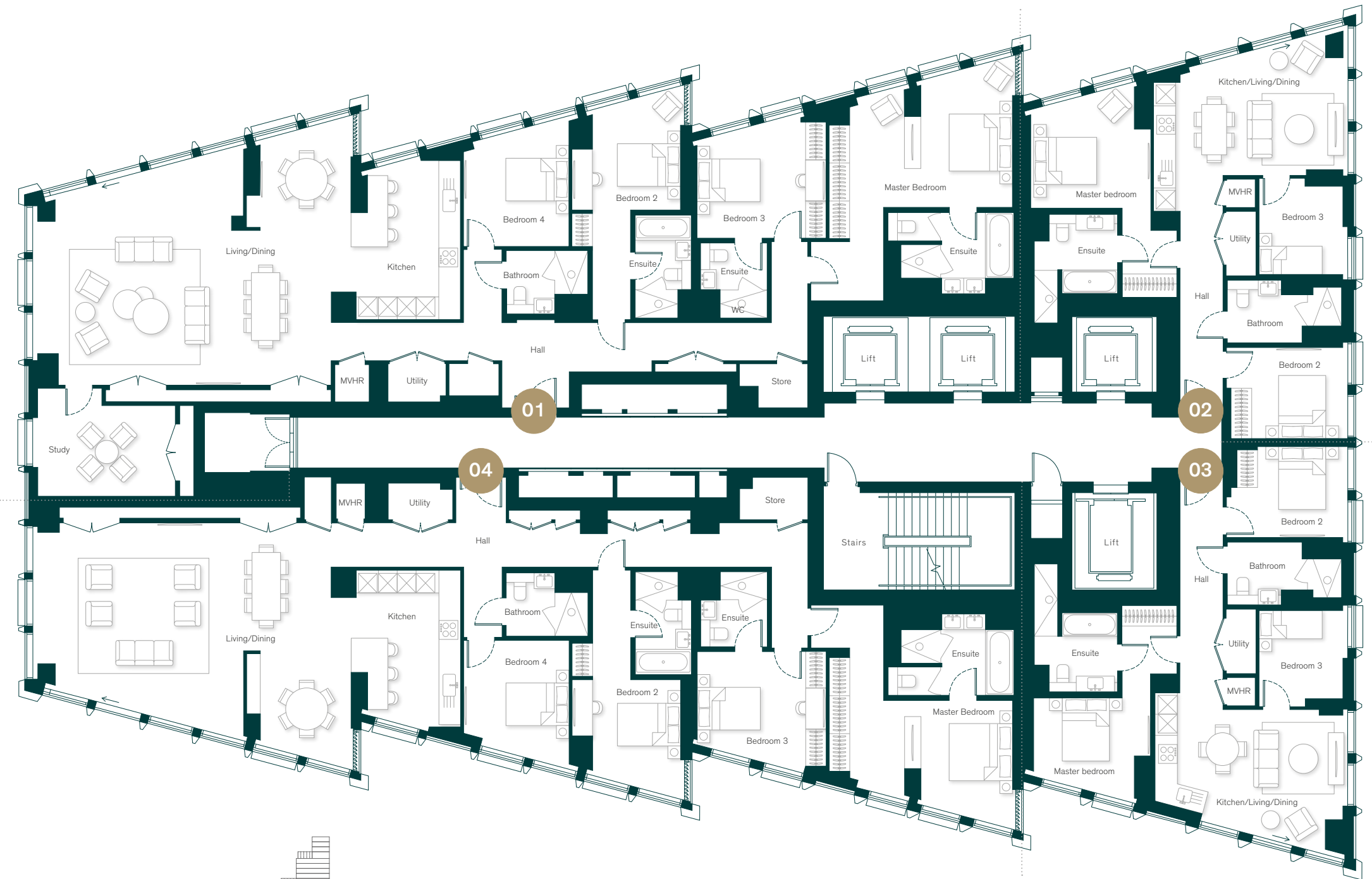
3 bedroom	98.86 sq m/1,064 sq ft	
Kitchen/living/dining	5.46 × 3.70m	17' 11" × 12' 2"
Primary bedroom	3.60 × 3.28m	11' 10" × 10' 9"
Bedroom 2	3.05 × 2.88m	10' 0" × 9' 6"
Bedroom 3	2.81 × 2.80m	9' 3" × 9' 2"

Apartment 36.03 – 37.03

3 bedroom	96.39 sq m/1,038 sq ft	
Kitchen/living/dining	5.41 × 3.97m	17' 9" × 13' 0"
Primary bedroom	3.85 × 2.94m	12' 7" × 9' 8"
Bedroom 2	2.89 × 2.86m	9' 6" × 9' 5"
Bedroom 3	2.81 × 2.80m	9' 3" × 9' 2"

Apartment 36.04 – 37.04

4 bedroom	237.4 sq m/2,555 sq ft	
Kitchen/living/dining	9.46 × 6.07m	31' 0" × 19' 11"
Primary bedroom	5.16 × 3.41m	16' 11" × 11' 2"
Bedroom 2	3.37 × 2.79m	11' 1" × 9' 2"
Bedroom 3	3.44 × 3.43m	11' 3" × 11' 3"
Bedroom 4	3.73 × 3.35m	12' 3" × 10' 12"



Level 38

Apartment 38.01

4 bedroom	263.06 sq m/2,832 sq ft	
Kitchen/living/dining	9.46 × 6.80m	31' 0" × 22' 4"
Primary bedroom	5.16 × 4.12m	16' 11" × 13' 6"
Bedroom 2	3.55 × 2.79m	11' 8" × 9' 2"
Bedroom 3	3.60 × 3.44m	11' 10" × 11' 3"
Bedroom 4	3.80 × 3.35m	12' 6" × 10' 12"
Bedroom 5	4.95 × 2.98m	16' 3" × 9' 9"

Apartment 38.02

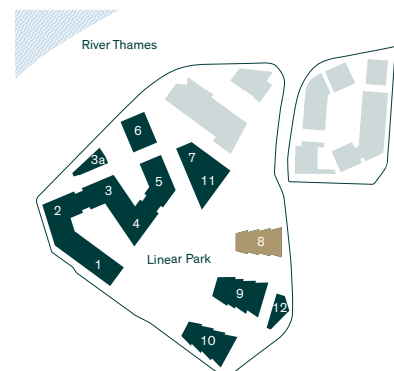
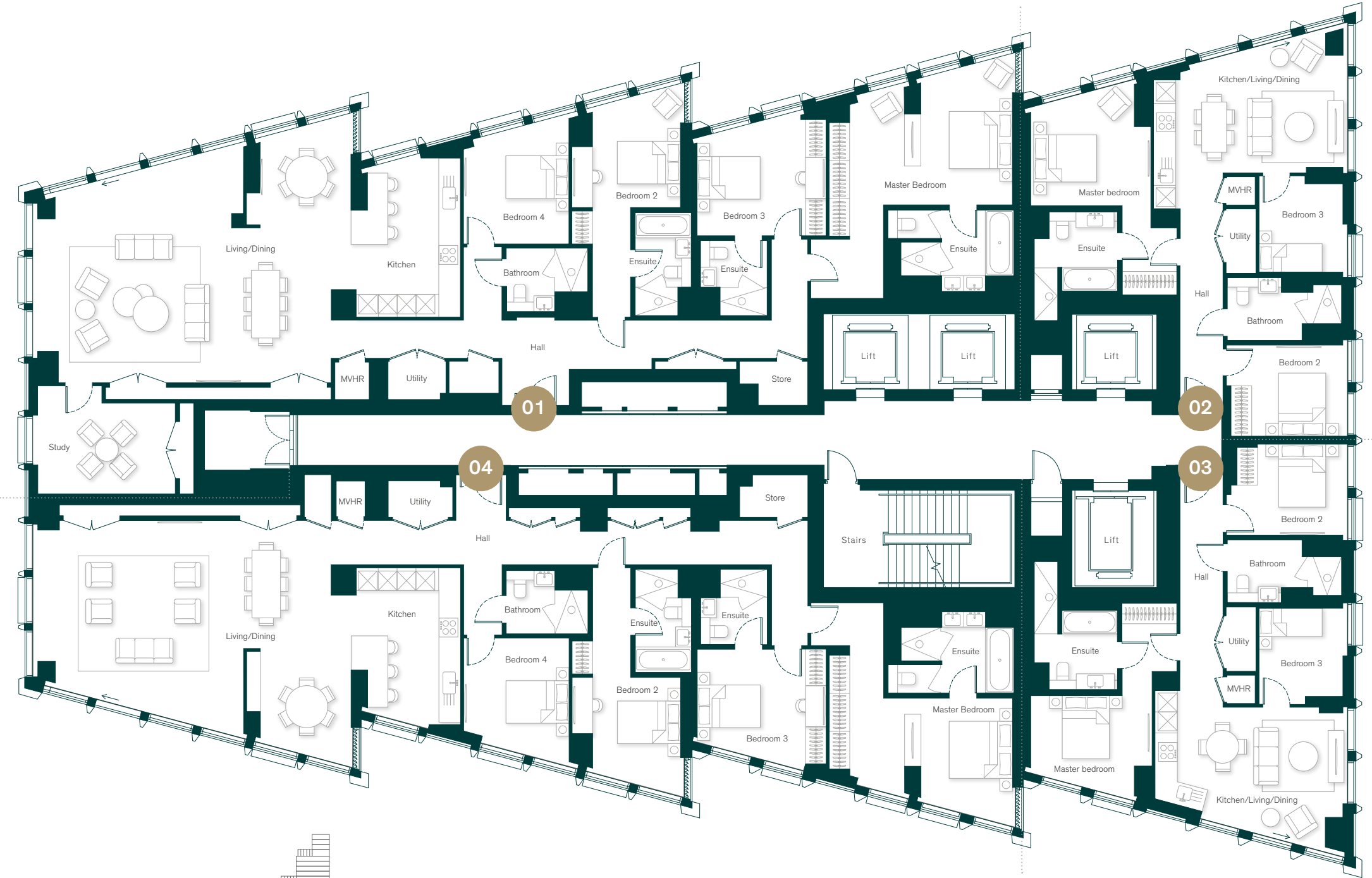
3 bedroom	98.86 sq m/1,064 sq ft	
Kitchen/living/dining	5.46 × 3.70m	17' 11" × 12' 2"
Primary bedroom	3.60 × 3.28m	11' 10" × 10' 9"
Bedroom 2	3.05 × 2.88m	10' 0" × 9' 6"
Bedroom 3	2.81 × 2.80m	9' 3" × 9' 2"

Apartment 38.03

3 bedroom	95.99 sq m/1,033 sq ft	
Kitchen/living/dining	5.41 × 3.97m	17' 9" × 13' 0"
Primary bedroom	3.85 × 2.94m	12' 7" × 9' 8"
Bedroom 2	2.89 × 2.86m	9' 6" × 9' 5"
Bedroom 3	2.81 × 2.80m	9' 3" × 9' 2"

Apartment 38.04

4 bedroom	238.39 sq m/2,566 sq ft	
Kitchen/living/dining	9.46 × 6.07m	31' 0" × 19' 11"
Primary bedroom	5.16 × 3.41m	16' 11" × 11' 2"
Bedroom 2	3.37 × 2.79m	11' 1" × 9' 2"
Bedroom 3	3.44 × 3.43m	11' 3" × 11' 3"
Bedroom 4	3.73 × 3.35m	12' 3" × 10' 12"



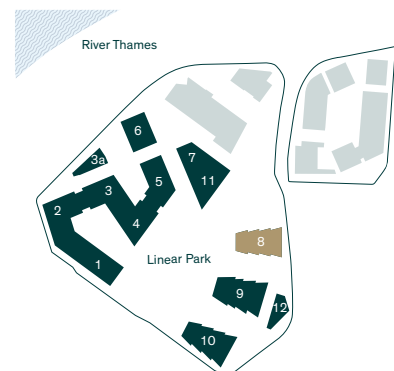
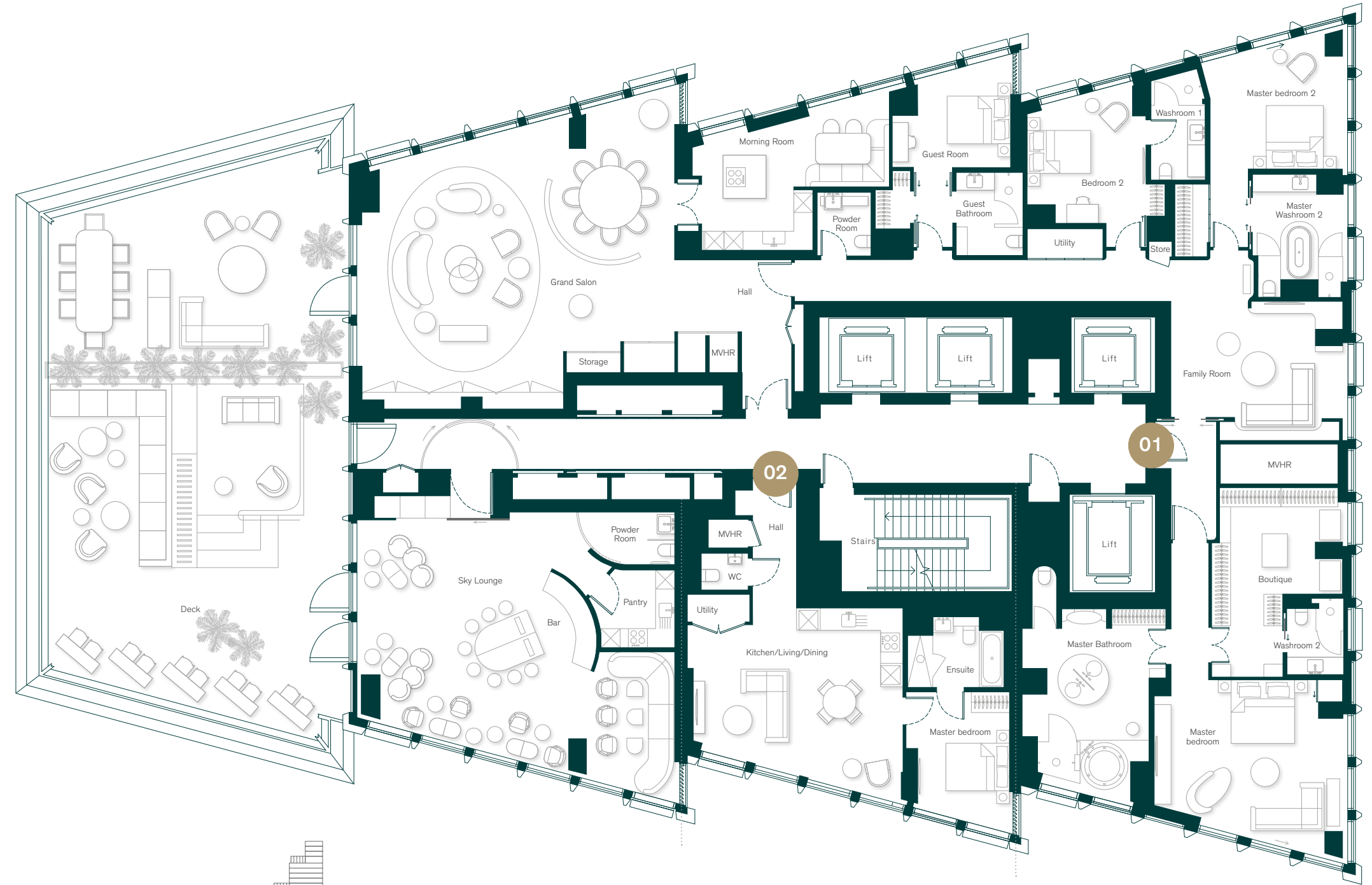
Level 39

Apartment 39.01

4 bedroom	368.64 sq m/3,968 sq ft	
Terrace	59.4 sq m/639.2 sq ft	
Kitchen/living/dining	10.01 × 7.99m	32' 10" × 26' 3"
Primary bedroom	6.09 × 5.14m	19' 12" × 16' 10"
Bedroom 2	4.32 × 3.79m	14' 2" × 12' 5"
Bedroom 3	4.17 × 3.73m	13' 8" × 12' 3"
Bedroom 4	3.72 × 3.19m	12' 2" × 10' 6"

Apartment 39.02

1 bedroom	73.8 sq m/794 sq ft	
Kitchen/living/dining	6.60 × 4.64m	21' 8" × 15' 3"
Primary bedroom	4.06 × 2.89m	13' 4" × 9' 6"



Levels 40 – 42

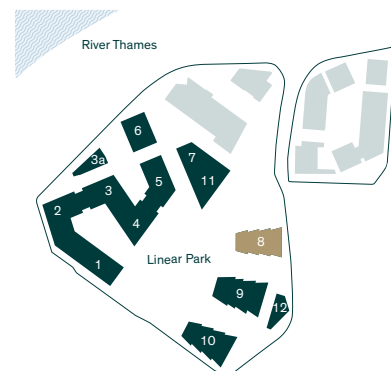
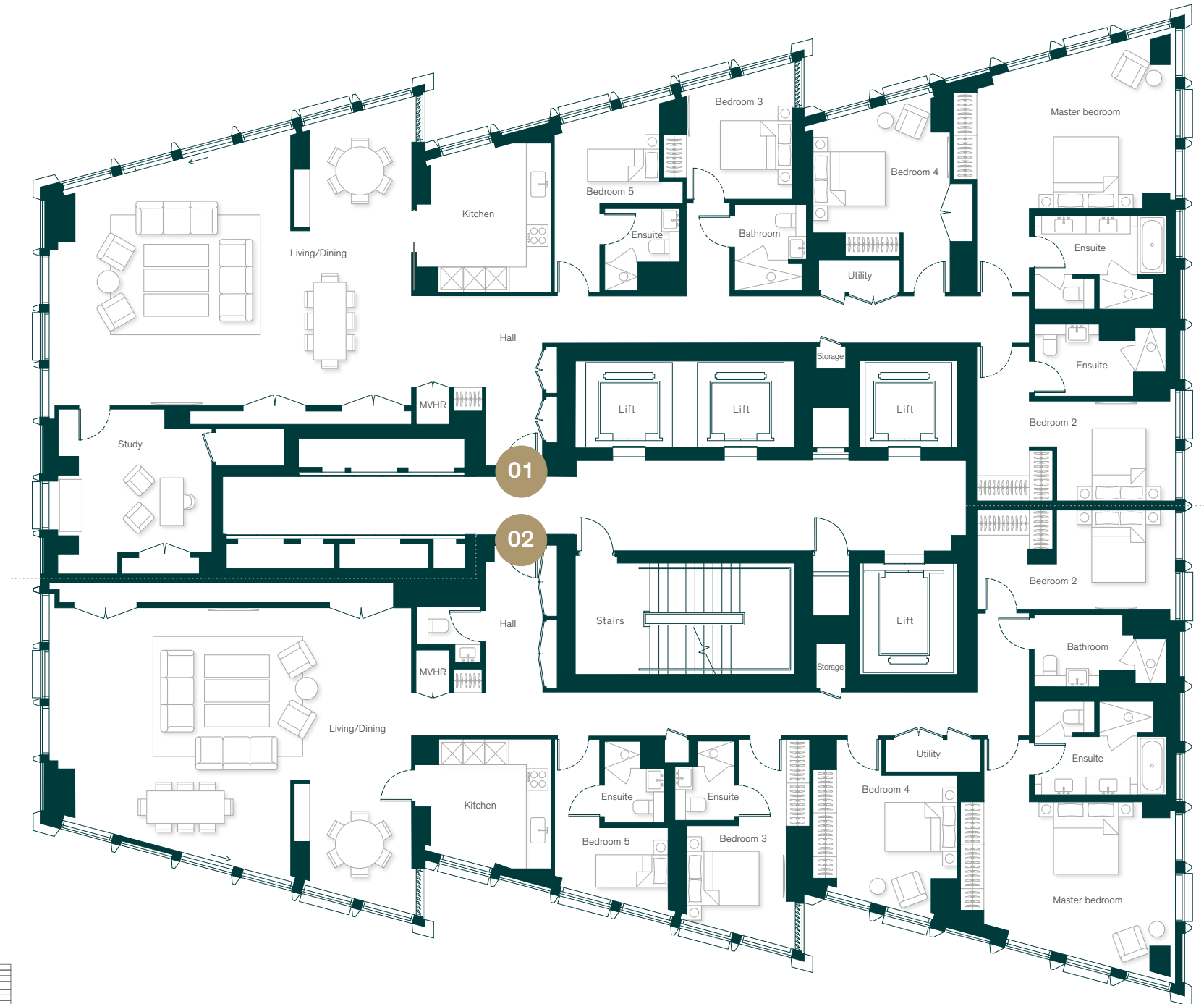


Apartment 40.01 - 42.01

5 bedroom	281.2 sq m/3,027 sq ft	
Kitchen	3.39 × 2.65m	11' 1" x 8' 8"
Living/dining	10.04 × 6.65m	32' 11" x 21' 10"
Primary bedroom	5.50 × 4.19m	18' 0" x 13' 9"
Bedroom 2	3.29 × 2.76m	10' 10" x 9' 1"
Bedroom 3	3.38 × 2.94m	11' 1" x 9' 8"
Bedroom 4	3.80 × 3.51m	12' 5" x 11' 6"
Bedroom 5	2.91 × 2.52m	9' 7" x 8' 3"
Study	4.56 × 4.51m	14' 12" x 14' 9"

Apartment 40.02 - 42.02

5 bedroom	254.87 sq m/2,743 sq ft	
Kitchen	2.82 × 2.65m	9' 3" x 8' 8"
Living/dining	10.04 × 6.58m	32' 11" x 21' 7"
Primary bedroom	5.31 × 4.19m	17' 5" x 13' 9"
Bedroom 2	3.29 × 2.76m	10' 10" x 9' 1"
Bedroom 3	3.08 × 2.75m	10' 1" x 9' 0"
Bedroom 4	3.99 × 3.67m	13' 1" x 12' 0"
Bedroom 5	3.14 × 2.12m	10' 4" x 6' 12"



Level 43

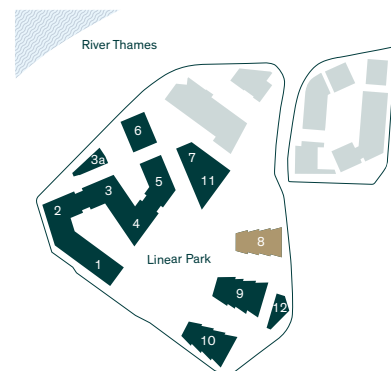
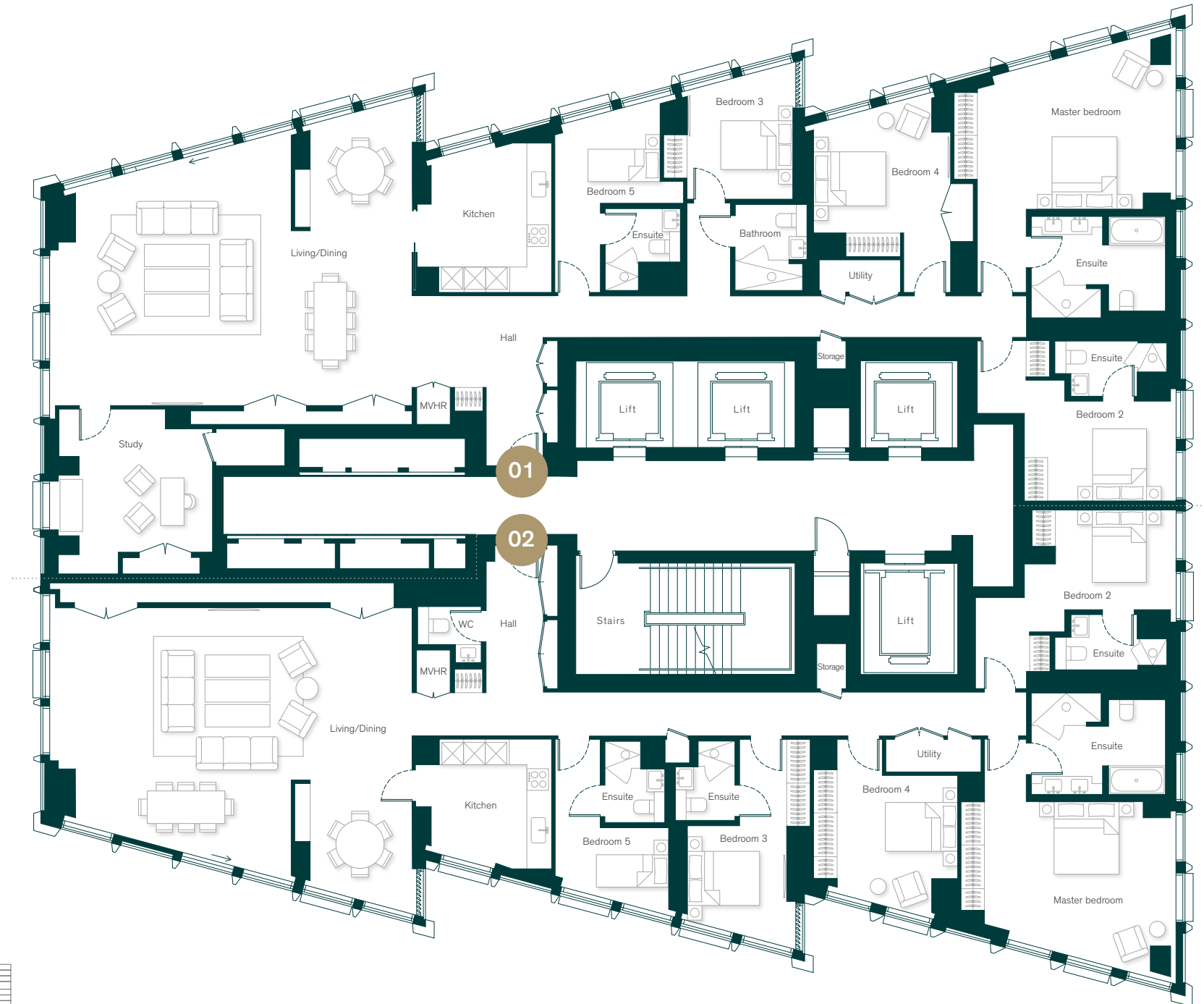


Apartment 43.01

5 bedroom	278.2 sq m/2,995 sq ft	
Kitchen	3.39 × 2.65m	11' 1" × 8' 8"
Living/dining	10.04 × 6.65m	32' 11" × 21' 10"
Primary bedroom	5.50 × 4.20m	18' 0" × 13' 9"
Bedroom 2	4.20 × 2.76m	13' 9" × 9' 1"
Bedroom 3	3.38 × 2.94m	11' 1" × 9' 8"
Bedroom 4	3.80 × 3.51m	12' 5" × 11' 6"
Bedroom 5	2.91 × 2.52m	9' 7" × 8' 3"
Study	4.56 × 4.51m	14' 12" × 14' 9"

Apartment 43.02

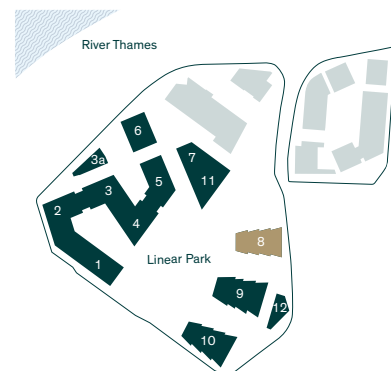
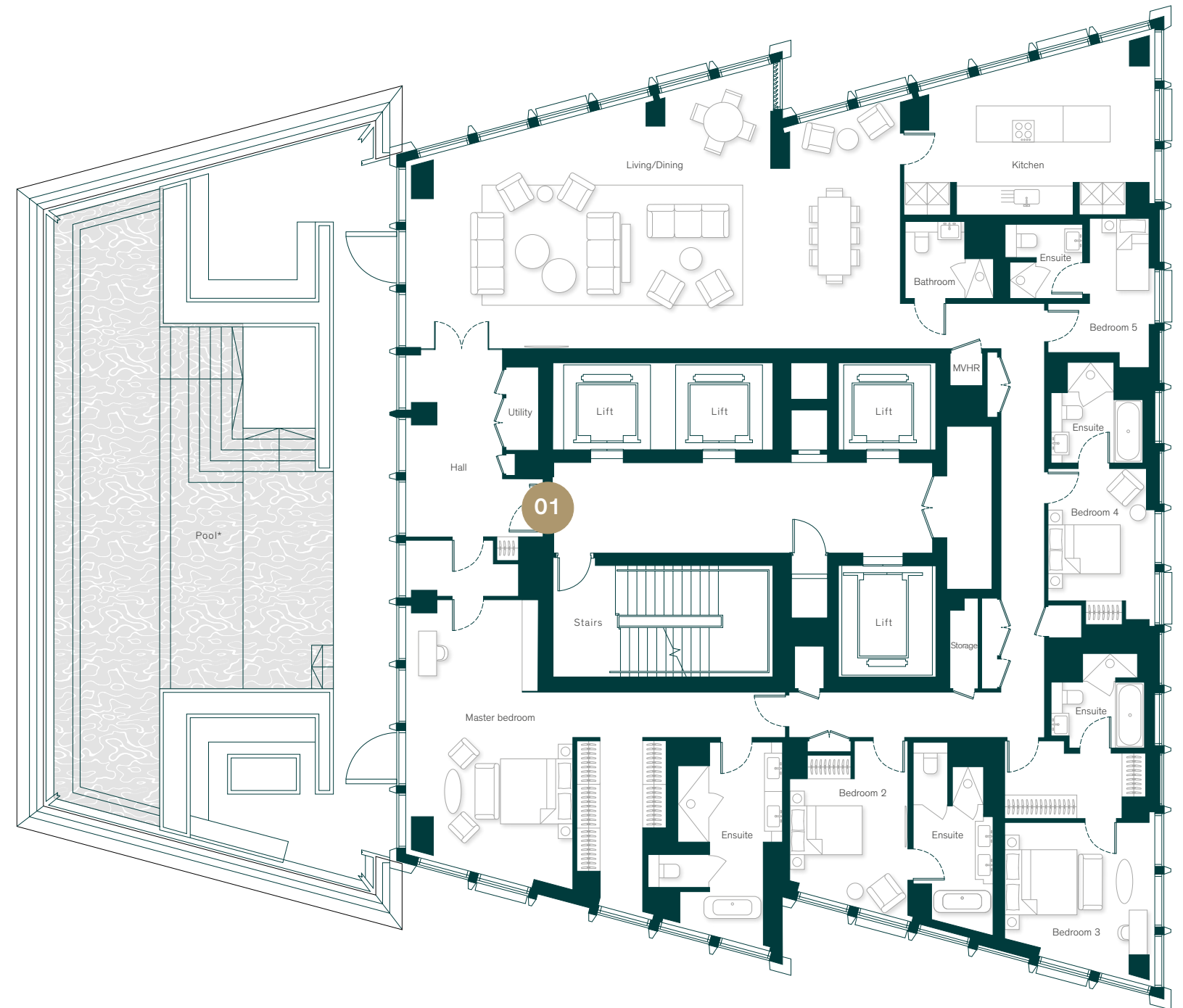
5 bedroom	250.19 sq m/2,693 sq ft	
Kitchen	2.82 × 2.65m	9' 3" × 8' 8"
Living/dining	10.04 × 6.55m	32' 11" × 21' 6"
Primary bedroom	5.31 × 4.23m	17' 5" × 13' 11"
Bedroom 2	3.34 × 2.76m	10' 11" × 9' 1"
Bedroom 3	3.08 × 2.75m	10' 1" × 9' 0"
Bedroom 4	3.99 × 3.67m	13' 1" × 12' 0"
Bedroom 5	3.14 × 2.12m	10' 4" × 6' 12"



Level 44

Apartment 44.01

5 bedroom	361.72 sq m/3,894 sq ft	
Terrace	182.4 sq m/1963.1 sq ft	
Kitchen	6.93 × 3.42m	22' 9" × 11' 3"
Living/dining	13.67 × 6.03m	44' 10" × 19' 9"
Primary bedroom	7.80 × 4.62m	25' 7" × 15' 2"
Bedroom 2	3.49 × 3.26m	11' 5" × 10' 8"
Bedroom 3	4.15 × 4.07m	13' 7" × 13' 4"
Bedroom 4	3.65 × 2.95m	11' 12" × 9' 8"
Bedroom 5	3.71 × 1.81m	12' 2" × 5' 11"

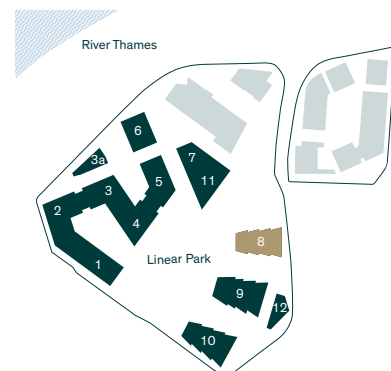
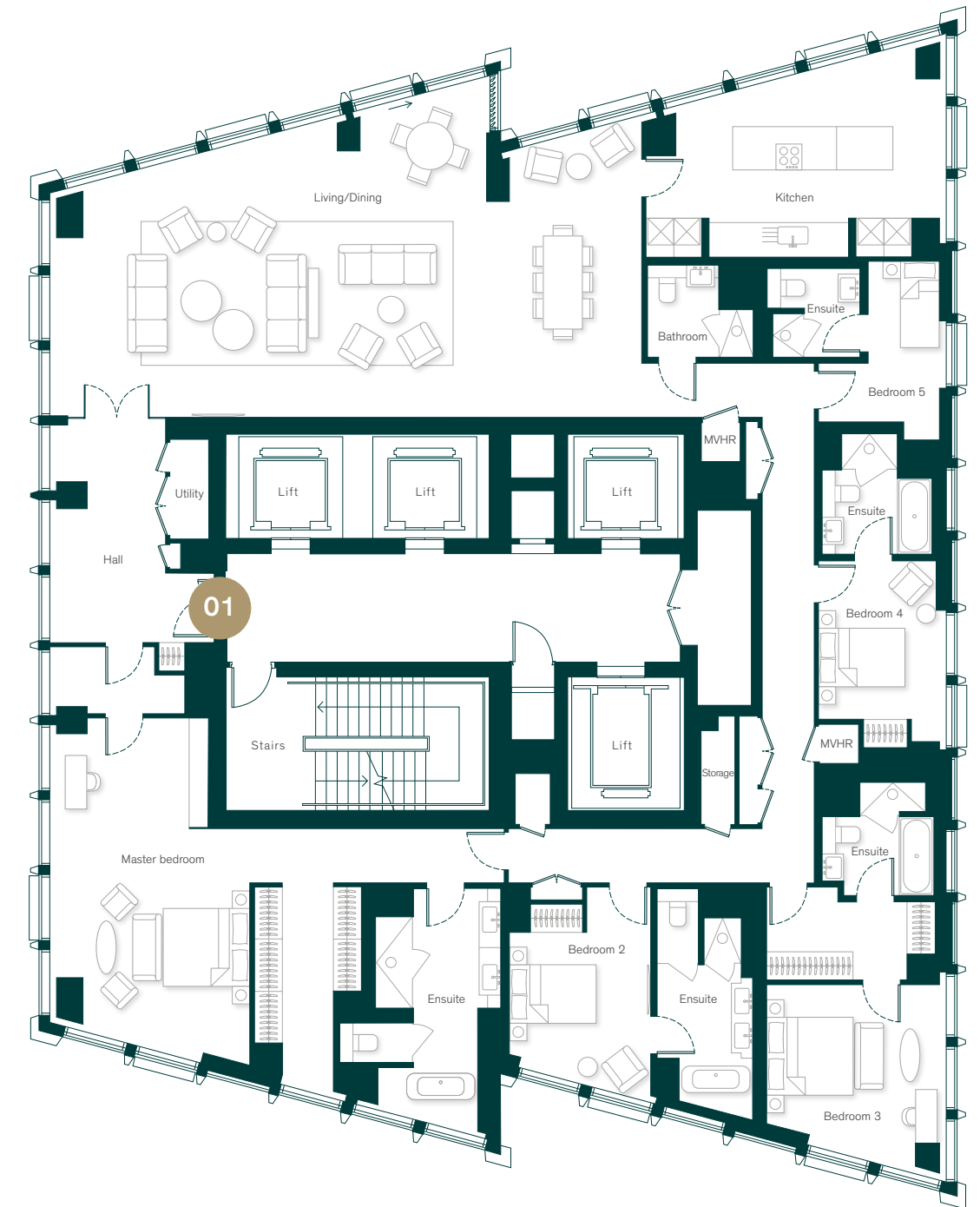


*Terrace to be fitted out by purchaser. Pool is indicative only.

Levels 45 – 46

Apartment 45.01 - 46.01

5 bedroom	362.02 sq m/3,897 sq ft	
Kitchen	6.93 × 3.42m	22' 9" × 11' 3"
Living/dining	13.67 × 6.03m	44' 10" × 19' 9"
Primary bedroom	7.80 × 4.62m	25' 7" × 15' 2"
Bedroom 2	3.49 × 3.26m	11' 5" × 10' 8"
Bedroom 3	4.15 × 4.07m	13' 7" × 13' 4"
Bedroom 4	3.65 × 2.95m	11' 12" × 9' 8"
Bedroom 5	3.71 × 1.81m	12' 2" × 5' 11"



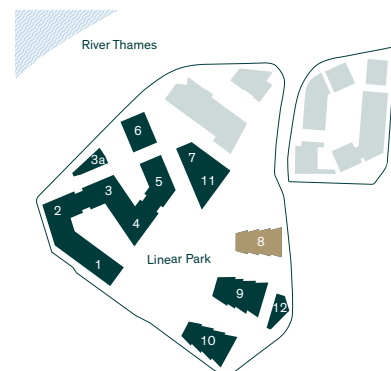
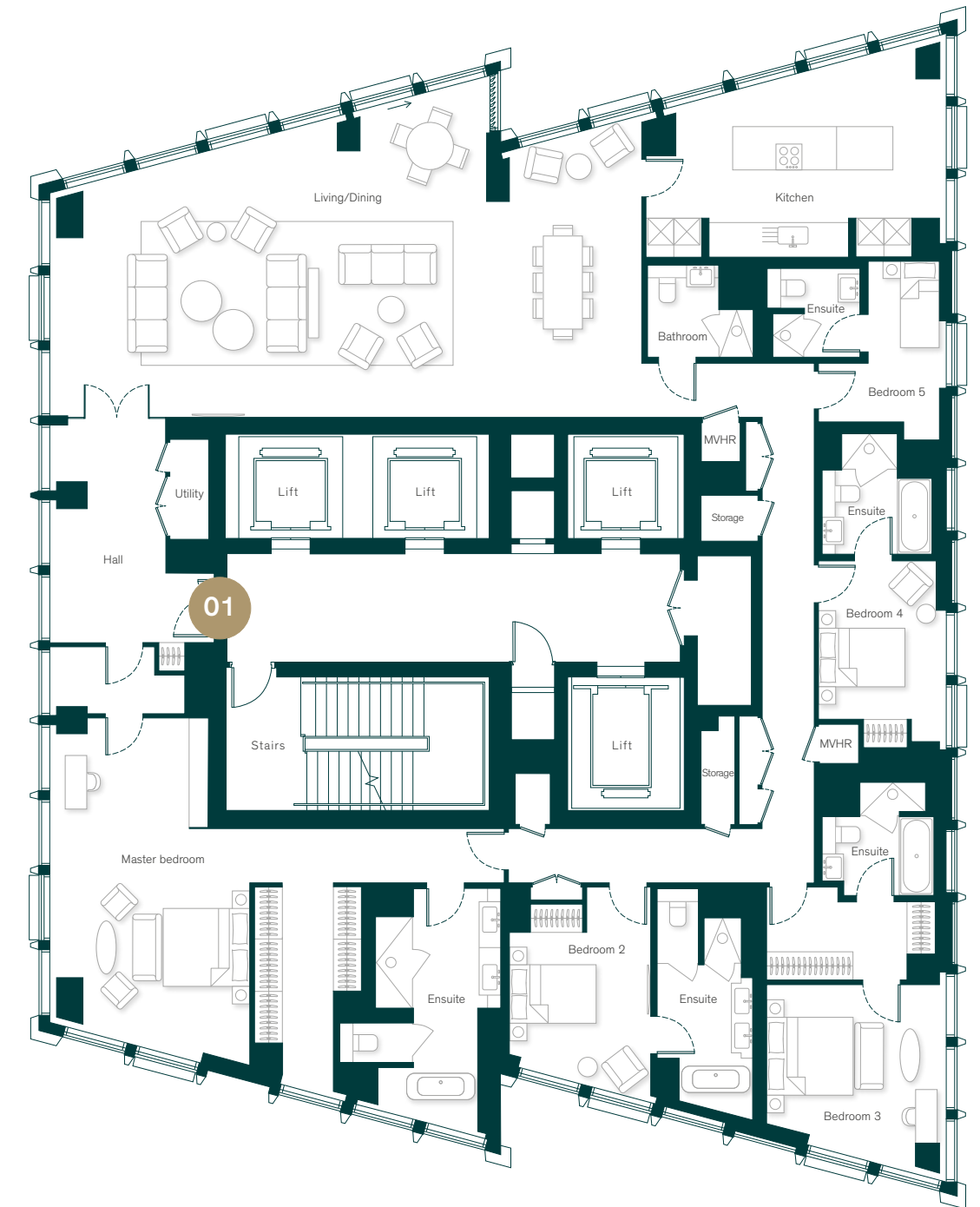
Level 47

Apartment 47.01

5 bedroom	362.53 sq m/3,902 sq ft	
Kitchen	6.93 × 3.42m	22' 9" × 11' 3"
Living/dining	13.67 × 6.03m	44' 10" × 19' 9"
Primary bedroom	7.80 × 4.62m	25' 7" × 15' 2"
Bedroom 2	3.49 × 3.26m	11' 5" × 10' 8"
Bedroom 3	4.15 × 4.07m	13' 7" × 13' 4"
Bedroom 4	3.65 × 2.95m	11' 12" × 9' 8"
Bedroom 5	3.71 × 1.81m	12' 2" × 5' 11"



Building No.8



Level 48

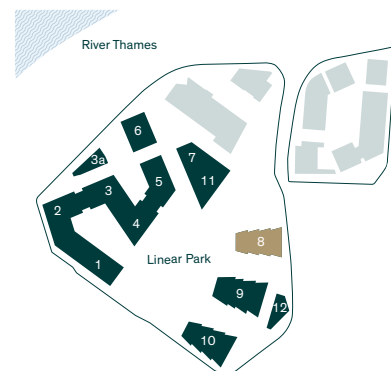


Apartment 48.01

3 bedroom	169.38 sq m/1,823 sq ft	
Kitchen	3.56 × 1.50m	11' 9" × 4' 11"
Living/dining	10.89 × 4.28m	35' 9" × 14' 1"
Primary bedroom	3.86 × 3.32m	12' 8" × 10' 11"
Bedroom 2	5.00 × 2.83m	16' 5" × 9' 4"
Bedroom 3	4.10 × 2.75m	13' 5" × 9' 0"

Apartment 48.02

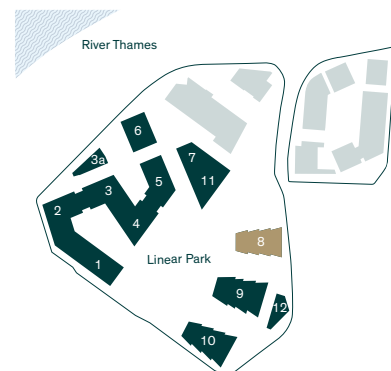
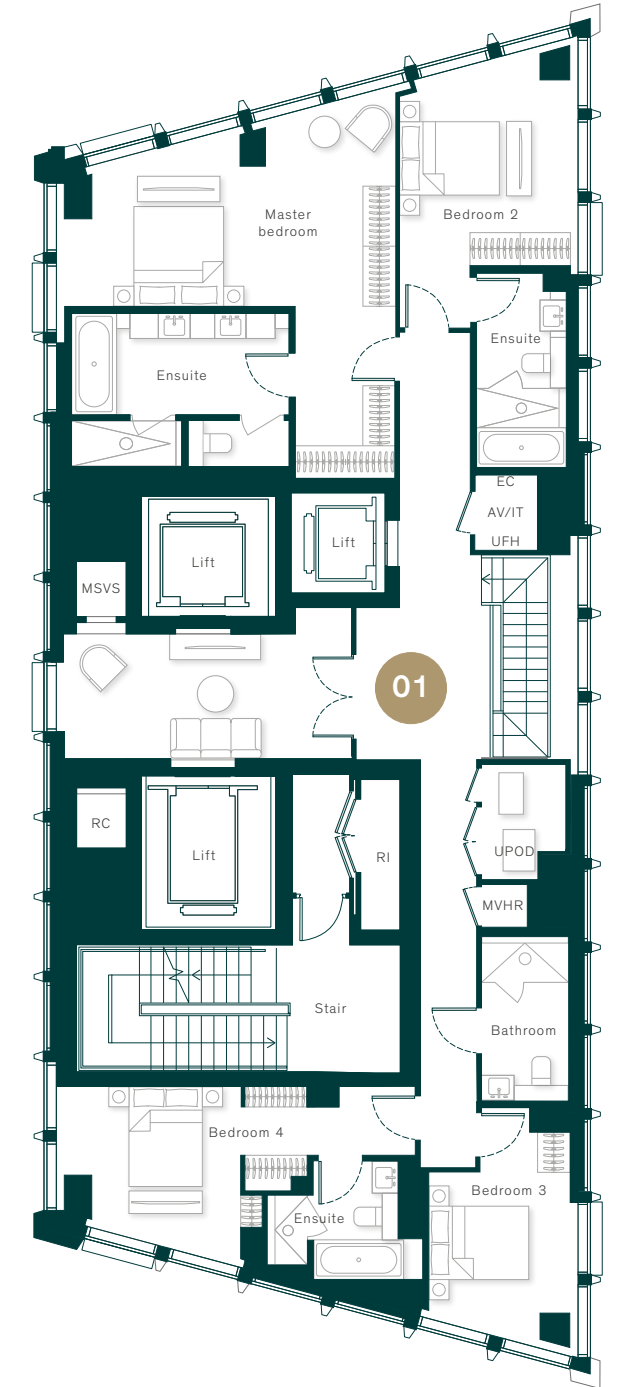
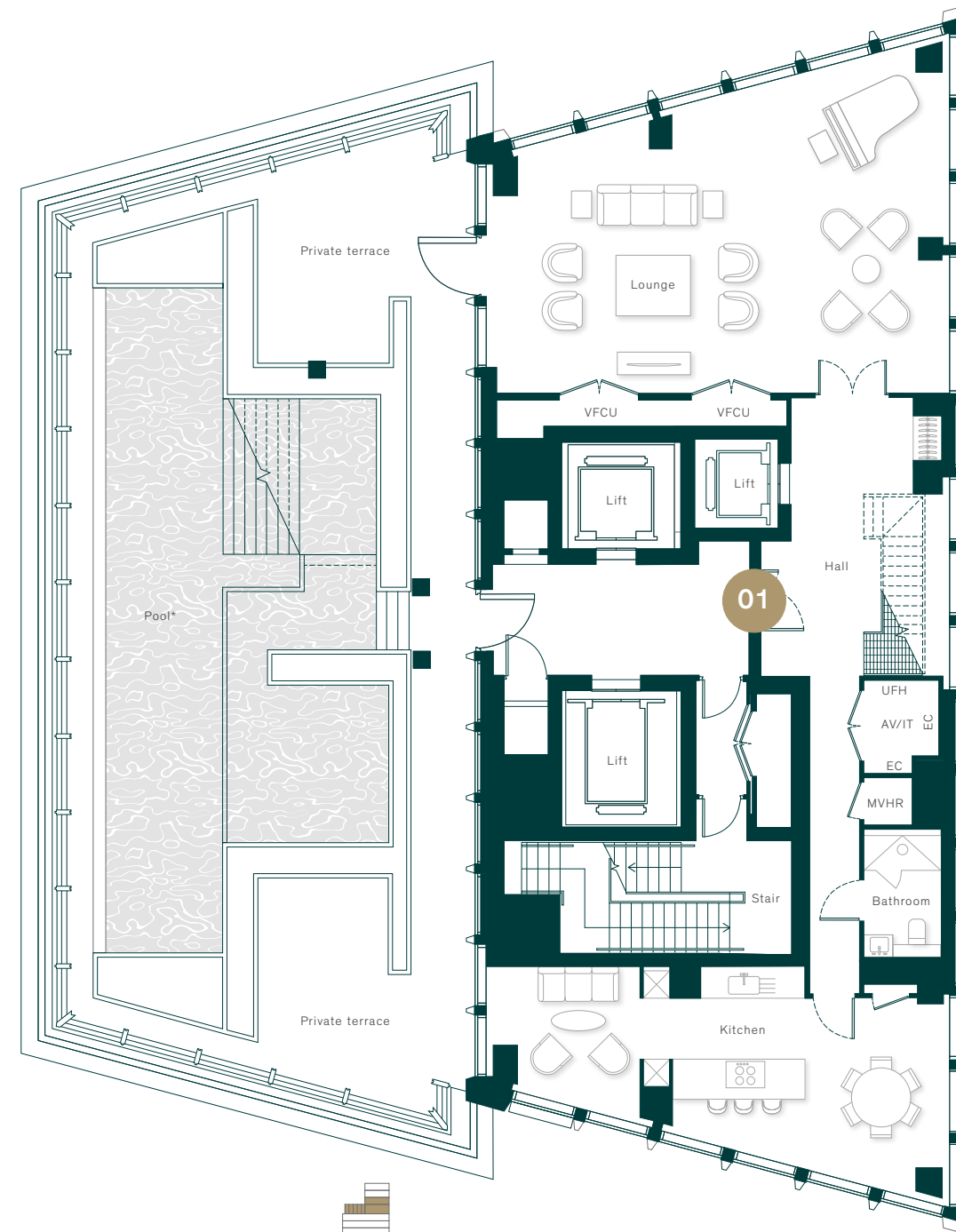
3 bedroom	144.03 sq m/1,550 sq ft	
Kitchen/living/dining	10.89 × 4.37m	35' 9" × 14' 4"
Primary bedroom	4.66 × 3.24m	15' 3" × 10' 8"
Bedroom 2	4.25 × 2.73m	13' 11" × 8' 12"
Bedroom 3	2.91 × 2.44m	9' 7" × 7' 12"



Level 49 & 50

Apartment 49.01

4 bedroom	351.05 sq m/3,779 sq ft	
Terrace	195.0 sq m/2,099.4 sq ft	
Kitchen	10.45 × 3.62m	34' 3" × 11' 11"
Living/dining	10.45 × 6.78m	34' 3" × 22' 3"
Primary bedroom	6.14 × 3.60m	20' 2" × 11' 10"
Bedroom 2	4.35 × 3.57m	14' 3" × 11' 8"
Bedroom 3	3.34 × 2.98m	10' 11" × 9' 9"
Bedroom 4	3.68 × 3.24m	12' 1" × 10' 8"



*Terrace to be fitted out by purchaser. Pool is indicative only.

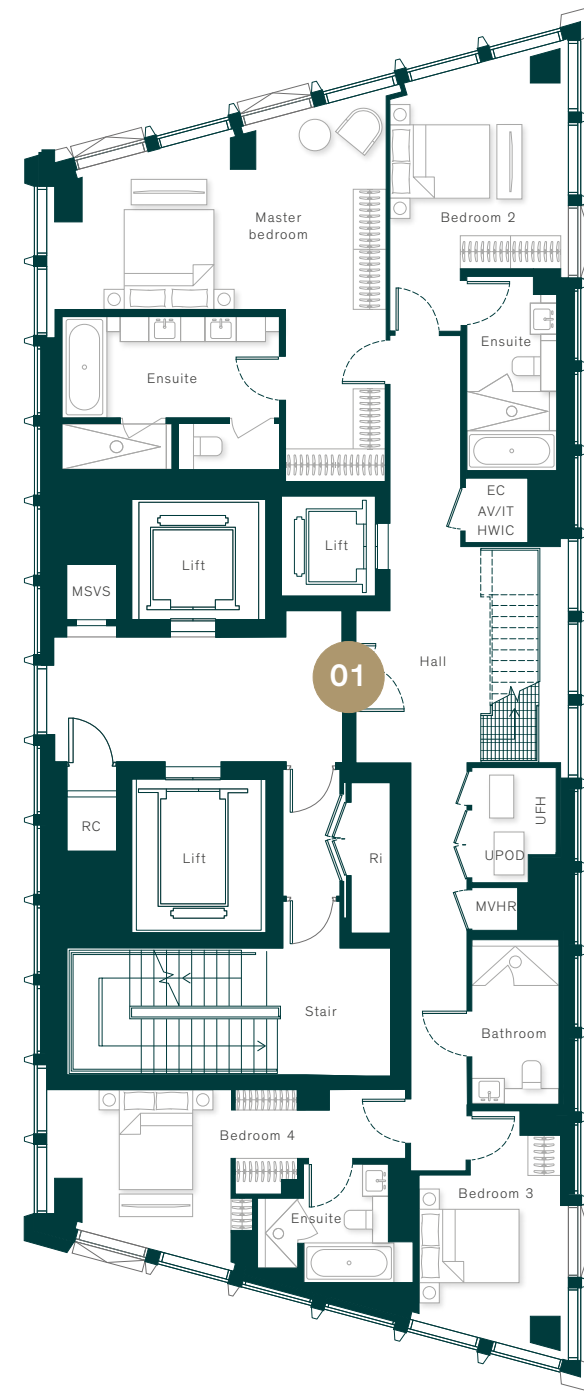
Level 51, 52 & roof

Apartment 51.01

4 bedroom duplex	349 sq m/3,757 sq ft
Apartment area	346.83 sq m/3,733.3 sq ft
Roof area	65.3 sq m/702.4 sq ft
Kitchen	10.45 × 3.36m 34' 3" x 11' 0"
Living/dining	10.45 × 6.78m 34' 3" x 22' 3"
Primary bedroom	6.14 × 3.59m 20' 2" x 11' 9"
Bedroom 2	4.21 × 3.57m 13' 10" x 11' 8"
Bedroom 3	3.34 × 2.98m 10' 11" x 9' 9"
Bedroom 4	3.68 × 3.24m 12' 1" x 10' 8"



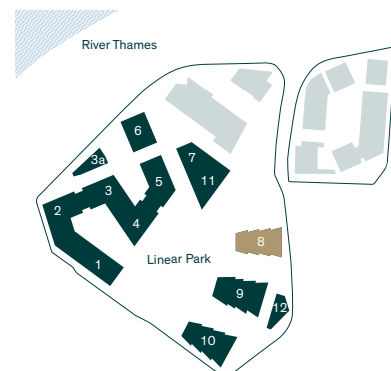
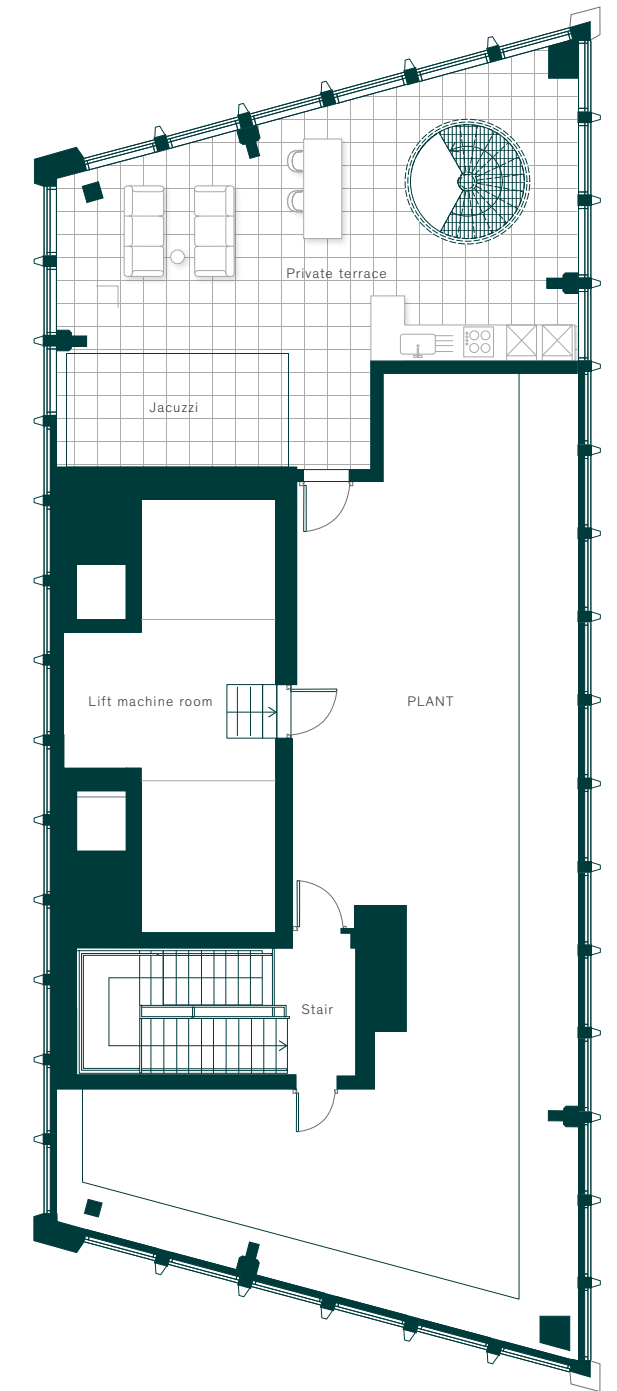
Level 51



Level 52



Roof





INTERNATIONALLY RENOWNED DESIGN TEAM

A best-in-class team has been brought together to deliver Building No.9 as well as to contribute to the Thames City destination as a whole.



Yun House — Four Seasons Hotel Kuala Lumpur



Burj Khalifa — Dubai



One Hyde Park — London



HBA Residential — Private Residence

AB CONCEPT

Founded in 1999 by Ed Ng and Terence Ngan, AB Concept is an international interior design and architecture studio focused on creating luxury environments across the hospitality, commercial and residential sectors. The studio's approach results in projects offering bespoke experiences through narrative-driven interiors with meticulous attention to detail.

SOM

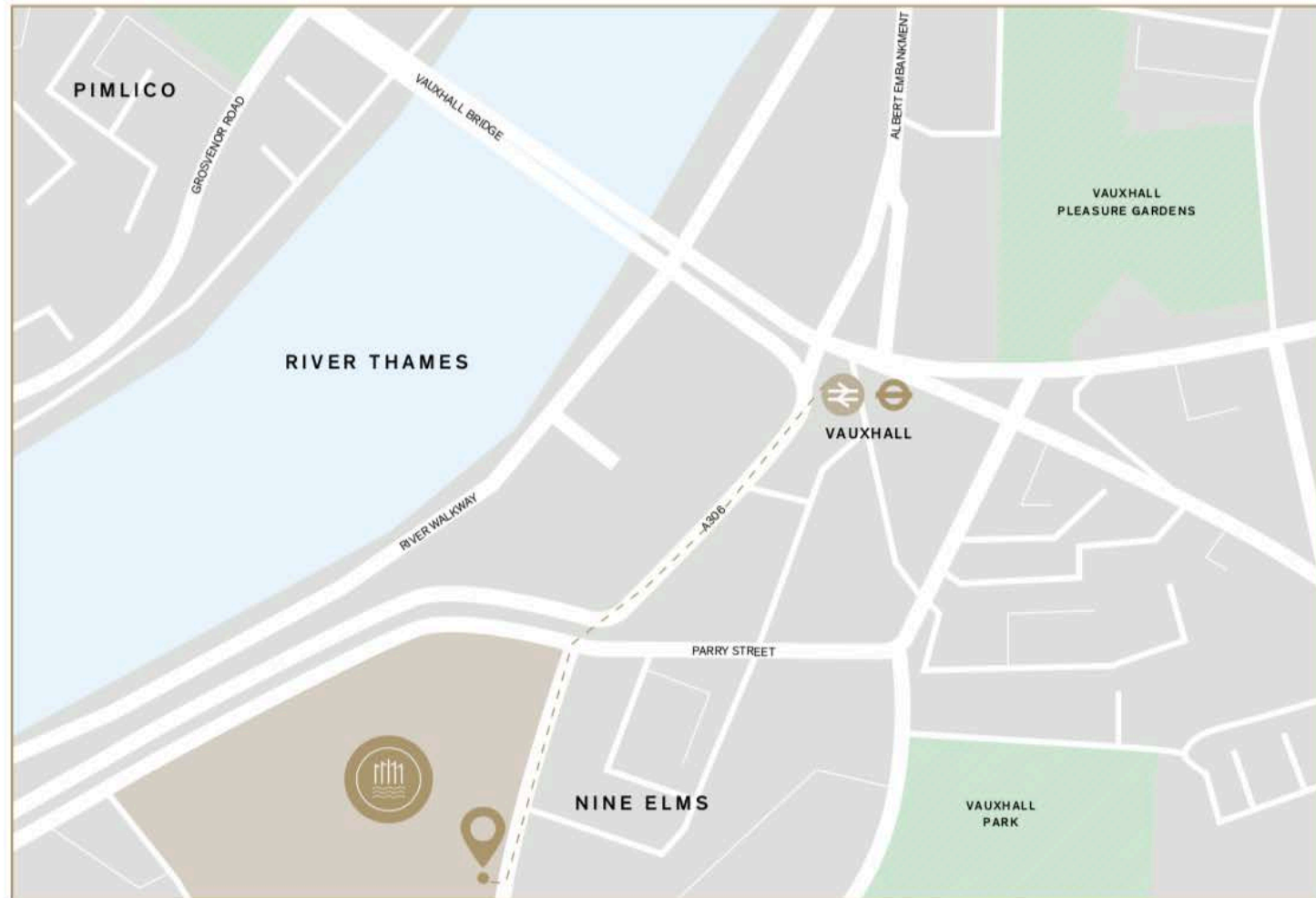
Skidmore, Owings & Merrill LLP (SOM) is one of the largest and most influential architecture, interior design, engineering and urban planning firms in the world. They are renowned for their iconic buildings such as Burj Khalifa and their commitment to design excellence, innovation, and sustainability.

GILLESPIES

Gillespies is an award-winning landscape architecture and urban design practice with over 50 years' experience. Innovative and groundbreaking, their designs are at the forefront of major developments around the world.

HBA

HBA Residential, (the residential specialist within Hirsch Bedner Associates), are masters of interior design whose ideas have informed the signature look of many of the most noted hotels, luxury brands, urban resort spas and residential complexes in the world.



CONTACT US

+44 (0)20 3912 0137

thamescity.com

sales@thamescity.com

@ thames_city

VISIT US

The Gallery, Thames City
6 Carnation Way
London SW8 5GZ

Misrepresentation Act

Floor plans are not to scale and are for indicative purposes only.

Any areas, measurements or distances are approximate. The text, images and plans are for guidance only and are not necessarily comprehensive. Any photography/computer generated images of views are provided as a guide only. As with any London development there may be ongoing planning matters and consents that could result in these views changing over time. Please speak to your solicitor to whom full details of any neighbouring schemes will be available. It should not be assumed that the property has all necessary planning, building regulation or other consents and any services, equipment or facilities have not been tested. Purchasers must satisfy themselves by inspection or otherwise. The internal layouts and the terrace pools to the apartments are subject to planning.

The particulars in this document are indicative and are prepared for the guidance only of prospective owners, tenants and occupants. They are intended to give a fair overall description of the property but do not constitute a warranty or representation or form part of an offer or contract. Any information contained herein (whether in text, plans, photographs or computer-generated images) is given in good faith and should not be relied upon as being a statement or representation of fact. Any areas, measurements or distances referred to herein are approximate only. All furnishings, wallpaper, curtains and pendant lighting are for illustrative purposes only. Descriptions of a property are inevitably subjective and the descriptions contained herein are used in good faith as an opinion and not by way of statement of fact. Thames City is a marketing name and will not necessarily form part of the approved postal address.

All CGIs within this document are indicative only and subject to change.

© September 2021

Designed and produced by Identity.
identity-design.co.uk

A development by:



